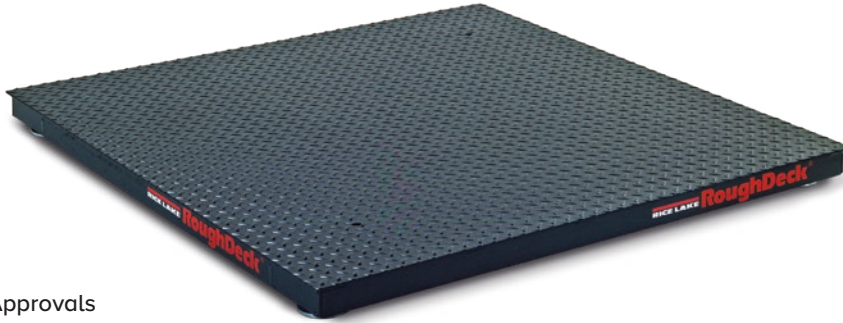


# RoughDeck® HP-H

High Performance Heavy Capacity Floor Scale



## Approvals



Capacities  
greater  
than  
10,000kg

## Part Number/Price

Part #	Part #	Size (W × L × H)	Capacity	Est. Weight	Price
With Quick Connector	Without Quick Connector				
<b>NTEP Approved</b>					
66474	67717	4 ft × 4 ft × 4 in	20,000 lb (10,000 kg)	601 lb	Consult
66475	67718	4 ft × 5 ft × 4 in	20,000 lb (10,000 kg)	775 lb	Consult
66476	67719	4 ft × 6 ft × 4 in	20,000 lb (10,000 kg)	926 lb	Consult
66477	67720	4 ft × 7 ft × 4 in	20,000 lb (10,000 kg)	1,135 lb	Consult
66478	67721	5 ft × 5 ft × 4 in	20,000 lb (10,000 kg)	926 lb	Consult
66479	67722	5 ft × 6 ft × 4 in	20,000 lb (10,000 kg)	1,104 lb	Consult
66480	67723	5 ft × 7 ft × 4 in	20,000 lb (10,000 kg)	1,377 lb	Consult
66481	67724	6 ft × 6 ft × 4 in	20,000 lb (10,000 kg)	1,319 lb	Consult
66482	67725	6 ft × 8 ft × 4 in	20,000 lb (10,000 kg)	1,861 lb	Consult
66483	67726	7 ft × 9 ft × 4 in	20,000 lb (10,000 kg)	2,408 lb	Consult
66484	67727	7 ft × 10 ft × 4 in	20,000 lb (10,000 kg)	2,959 lb	Consult
66485	67728	8 ft × 10 ft × 4 in	20,000 lb (10,000 kg)	3,108 lb	Consult
66486	67729	4 ft × 4 ft × 5 in	30,000 lb (15,000 kg)	675 lb	Consult
66487	67730	4 ft × 5 ft × 5 in	30,000 lb (15,000 kg)	839 lb	Consult
66488	67731	4 ft × 6 ft × 5 in	30,000 lb (15,000 kg)	1,071 lb	Consult
66489	67732	4 ft × 7 ft × 5 in	30,000 lb (15,000 kg)	1,200 lb	Consult
66490	67733	5 ft × 5 ft × 5 in	30,000 lb (15,000 kg)	1,021 lb	Consult
66491	67734	5 ft × 7 ft × 5 in	30,000 lb (15,000 kg)	1,448 lb	Consult
66492	67735	6 ft × 6 ft × 5 in	30,000 lb (15,000 kg)	1,438 lb	Consult
66493	67736	7 ft × 10 ft × 5 in	30,000 lb (15,000 kg)	3,372 lb	Consult
66494	67737	8 ft × 10 ft × 5 in	30,000 lb (15,000 kg)	3,699 lb	Consult
<b>Canadian Weights and Measures Approved</b>					
197355	197365	4 ft × 4 ft × 5 in	30,000 lb (15,000 kg)	675 lb	Consult
197356	197366	4 ft × 5 ft × 5 in	30,000 lb (15,000 kg)	839 lb	Consult
197357	197367	4 ft × 6 ft × 5 in	30,000 lb (15,000 kg)	1,071 lb	Consult
197358	197368	4 ft × 7 ft × 5 in	30,000 lb (15,000 kg)	1,200 lb	Consult
197359	197369	5 ft × 5 ft × 5 in	30,000 lb (15,000 kg)	1,021 lb	Consult
197360	197375	5 ft × 7 ft × 5 in	30,000 lb (15,000 kg)	1,448 lb	Consult
197361	197376	6 ft × 6 ft × 5 in	30,000 lb (15,000 kg)	1,438 lb	Consult
197363	197377	7 ft × 10 ft × 5 in	30,000 lb (15,000 kg)	3,372 lb	Consult
197364	197378	8 ft × 10 ft × 5 in	30,000 lb (15,000 kg)	3,699 lb	Consult

## Standard Features

- Heavy-duty industrial design
- Structural steel channel frame
- Four NTEP Certified alloy steel, shear beam load cells
- 20 ft SURVIVOR® EL147HE hostile environment load cell cable
- Side-access junction box
- Rugged diamond safety treadplate deck
- Four adjustable mild steel SUREFOOT™ support feet

## Specifications

### End Load Capacity:

100% full scale at 20,000 lb  
66% full scale at 30,000 lb

### Cable Length:

20 ft (6.1 m) for connecting junction box to indicator

### Junction Box:

TuffSeal® JB4SS stainless steel, NEMA Type 4X junction box with signal trim card

### Welding:

Stitch

### Threaded Eyebolt:

Hole (3/4-10 NC) located in center of deck for easy lifting

### Warranty (limited):

Weldment: Five-year  
Load cells: Two-year  
All other components: One-year

### Approvals:

NTEP CC 92-001, Class III, 5,000 d  
Measurement Canada AM-5284  
(Only capacities greater than 10,000 kg)

## Options/Accessories

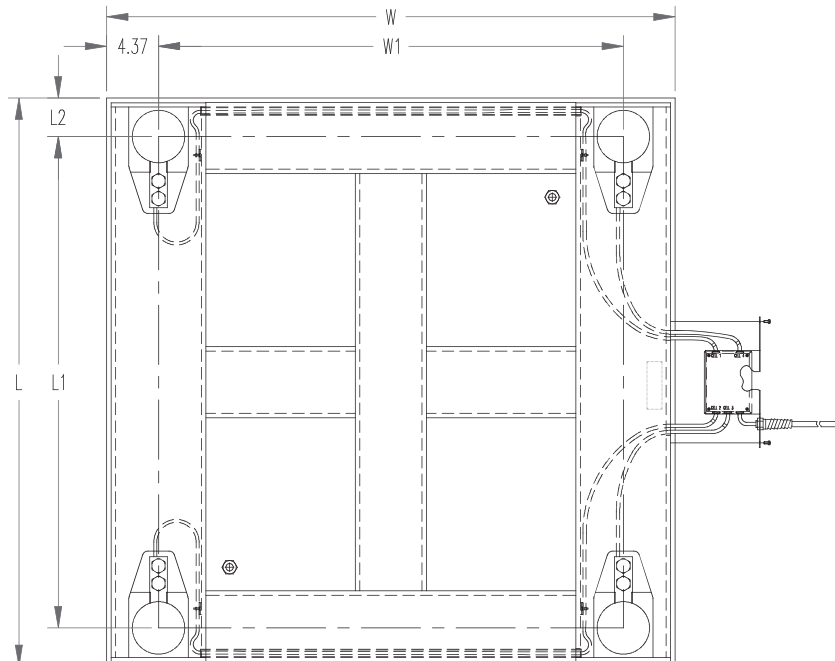
Part #	Description	Price
Consult	Access ramps available	See catalog page 386
Consult	Pit frames available	See catalog page 389
Consult	Bumper guards available	See catalog page 392 through catalog page 394
Consult	Portability frames available	See catalog page 395 through catalog page 400
Consult	Smooth deck instead of diamond safety treadplate	No charge
40387	Anchor plate set, mild steel, 20,000 lb capacity models (optional)	Consult
40388	Anchor plate set, mild steel, 30,000 lb capacity models (optional)	Consult
Consult	Four drilled deck holes for scale height adjustment	Consult
19352	Floor stand for indicator, 36.3 in high, mild steel	Consult
126384	Floor stand for indicator, 48 in high, mild steel	Consult
Consult	Mild steel deck with RL32018S IP66 stainless steel cFMus approved load cells and hardware	Consult
Consult	Mild steel deck with RL32218S-HE welded-seal IP69K stainless steel cFMus approved load cells and hardware	Consult
Consult	Epoxy paint	Consult
Consult	Top-access junction box	Consult

Dimensions				
20,000 Capacity				
Length	L1	W	W1	H
48.00 in	41.50 in	48.00 in	39.25 in	4.00 in
60.00 in	53.50 in	48.00 in	39.25 in	4.00 in
72.00 in	65.50 in	48.00 in	39.25 in	4.00 in
84.00 in	77.50 in	48.00 in	39.25 in	4.00 in
60.00 in	53.50 in	60.00 in	51.25 in	4.00 in
72.00 in	65.50 in	60.00 in	51.25 in	4.00 in
84.00 in	77.50 in	60.00 in	51.25 in	4.00 in
72.00 in	65.50 in	72.00 in	63.25 in	4.00 in
96.00 in	89.50 in	72.00 in	63.25 in	4.00 in
180.00 in	101.50 in	84.00 in	75.25 in	4.00 in
120.00 in	113.50 in	84.00 in	75.25 in	4.00 in
120.00 in	113.50 in	96.00 in	87.25 in	4.00 in

Dimensions				
30,000 Capacity				
Length	L1	W	W1	H
48.00 in	40.50 in	48.00 in	39.25 in	5.00 in
60.00 in	52.50 in	48.00 in	39.25 in	5.00 in
72.00 in	64.50 in	48.00 in	39.25 in	5.00 in
84.00 in	76.50 in	48.00 in	39.25 in	5.00 in
60.00 in	52.50 in	60.00 in	51.25 in	5.00 in
84.00 in	76.50 in	60.00 in	51.25 in	5.00 in
72.00 in	64.50 in	72.00 in	63.25 in	5.00 in
120.00 in	112.50 in	84.00 in	75.25 in	5.00 in
120.00 in	112.50 in	96.00 in	87.25 in	5.00 in

Note: 1 in=25.4 mm.

Note: 1 in=25.4 mm.



FLOOR SCALES