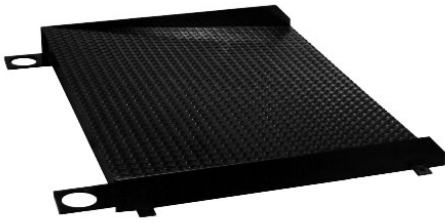


# RoughDeck® Access Ramps



FLOOR SCALES

## RoughDeck Access Ramps

Part #	Size (W x L x H)	Ramp Angle of Incline	Est. Weight	Price
<b>RoughDeck HP: 1,000 to 10,000 lb (diamond treadplate standard)</b>				
69040*	2.5 ft x 3 ft x 3.5 in	5.3°	115 lb	Consult
69041*	3 ft x 3 ft x 3.5 in	5.3°	133 lb	Consult
69042*	4 ft x 3 ft x 3.5 in	5.3°	177 lb	Consult
69043*	5 ft x 3 ft x 3.5 in	5.3°	226 lb	Consult
69184	2.5 ft x 4 ft x 3.5 in	3.9°	152 lb	Consult
69185	3 ft x 4 ft x 3.5 in	3.9°	177 lb	Consult
69186	4 ft x 4 ft x 3.5 in	3.9°	224 lb	Consult
69187	5 ft x 4 ft x 3.5 in	3.9°	272 lb	Consult
<b>RoughDeck HP-H: 20,000 lb (diamond treadplate standard)</b>				
69204	4 ft x 4 ft x 4 in	4.4°	487 lb	Consult
69205	5 ft x 4 ft x 4 in	4.4°	591 lb	Consult
69206	6 ft x 4 ft x 4 in	4.4°	689 lb	Consult
69207	7 ft x 4 ft x 4 in	4.4°	822 lb	Consult
69208	8 ft x 4 ft x 4 in	4.4°	1005 lb	Consult
<b>RoughDeck HP-H: 30,000 lb (diamond treadplate standard)</b>				
69210	4 ft x 5 ft x 5 in	4.4°	666 lb	Consult
69211	5 ft x 5 ft x 5 in	4.4°	806 lb	Consult
69212	6 ft x 5 ft x 5 in	4.4°	942 lb	Consult
69213	7 ft x 5 ft x 5 in	4.4°	1116 lb	Consult
69214	8 ft x 5 ft x 5 in	4.4°	1337 lb	Consult
<b>RoughDeck SS and HE: 1,000 to 10,000 lb (diamond treadplate standard)</b>				
69178*	2.5 ft x 3 ft x 3.5 in	5.3°	115 lb	Consult
69179*	3 ft x 3 ft x 3.5 in	5.3°	133 lb	Consult
69180*	4 ft x 3 ft x 3.5 in	5.3°	177 lb	Consult
69189	2.5 ft x 4 ft x 3.5 in	3.9°	152 lb	Consult
69190	3 ft x 4 ft x 3.5 in	3.9°	177 lb	Consult
69191	4 ft x 4 ft x 3.5 in	3.9°	224 lb	Consult
69192	5 ft x 4 ft x 3.5 in	3.9°	272 lb	Consult

\* Not recommended for use with pallet jacks

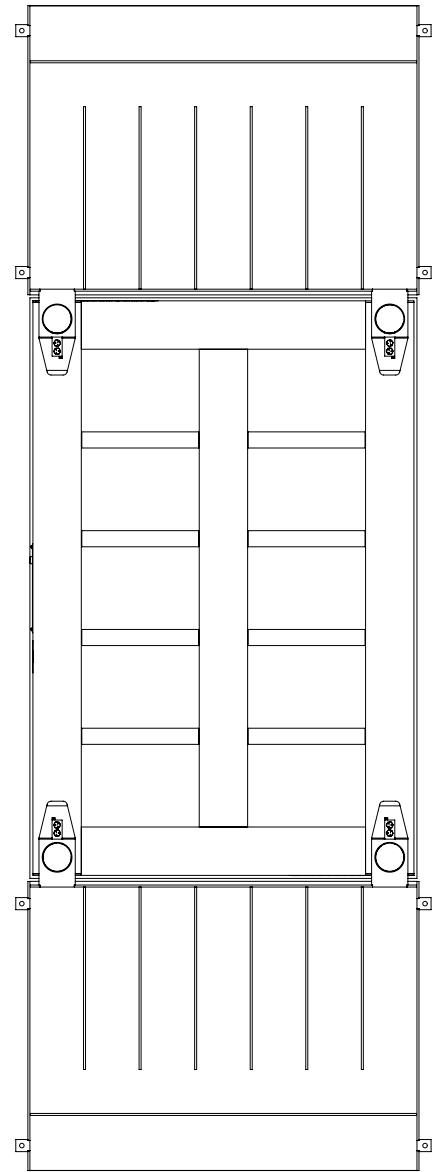
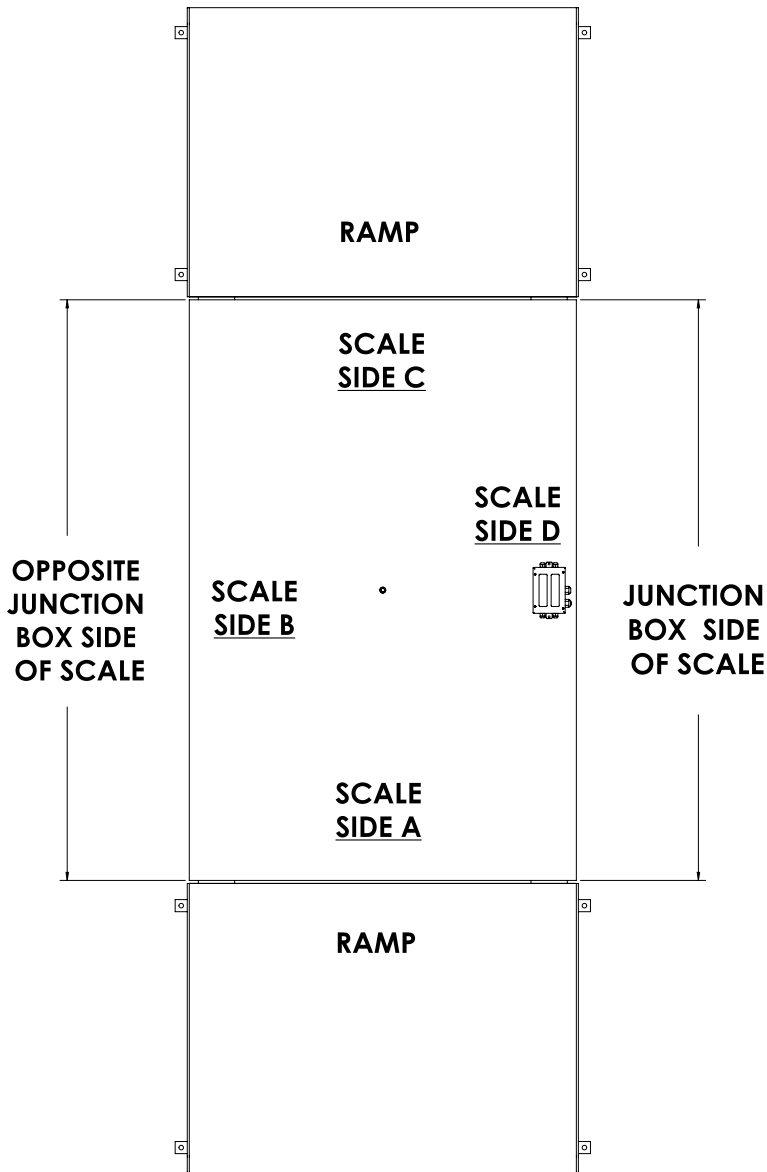
NOTE: Part numbered ramps are designed to fit scale on sides perpendicular to junction box. The junction box is always on longest side of scale unless specified differently.

NOTE: Part numbered ramps are designed to fit scale sides A or C; if you need a ramp to fit scale side B or D, please refer to page 387. Please request a quote for a special ramp.

## Options/Accessories

Part #	Description	Price
Consult	Epoxy paint	Consult list price add-on

# RoughDeck® Access Ramps



Underdeck View

FLOOR SCALES

Part numbered ramps are designed to fit scale sides A or C; if you need a ramp to fit scale side B or D, please request a quote for a special ramp.

The junction box is always on the longest side of the scale unless specified differently.