

Does not include load cell.  
Picture is a representation of actual product.

### Standard Features

- Capacities (per module): 250 to 5,000 lb SE
- Zinc plated, mild steel construction or stainless steel construction
- Self-checking, multi-directional movement
- Design incorporates a ball and cup for self-centering
- The RLBTM will accommodate a standard shear beam 250 to 5,000 lb SE load cell that has a threaded load hole such as the RL30000, RL39123, RL35023, RL35082 and RL35083

### Applications

- Light- to medium-capacity tanks and hoppers
- Conveyors

### Mild Steel Order Information

Load Rating (Per Module)	Part #	Price
<b>Single Module (Does NOT Include Load Cell)</b>		
250 lb to 5,000 lb SE	<b>53059</b>	Consult

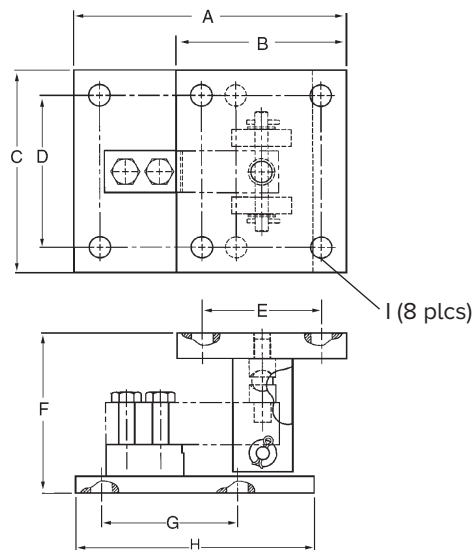
### Stainless Steel Order Information

Load Rating (Per Module)	Part #	Price
<b>Single Module (Does NOT Include Load Cell)</b>		
250 lb to 5,000 lb SE	<b>53066</b>	Consult

### Dimensions

Rated Capacity	A	B	C	D	E	F	G	H	I
lb/in									
250 to 5,000 SE*	8.00	5.00	6.00	4.50	3.50	4.75	4.00	7.00	0.63

\*SE refers to small envelope



WEIGH MODULES