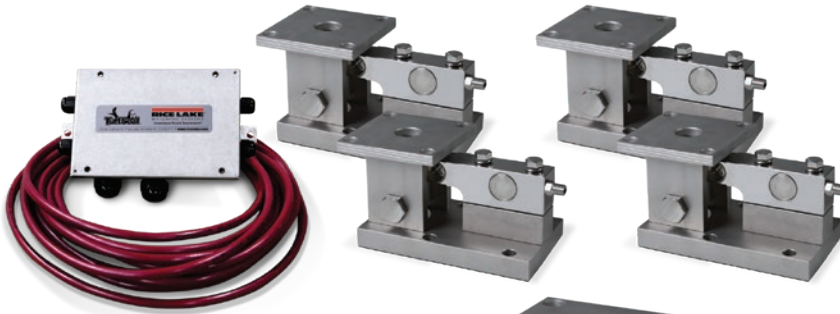


RL1900 Series

Stainless Steel Weigh Modules



Module with welded-seal RLSSB single-ended beam load cell

Picture is a representation of actual product.

Load Cell Approvals

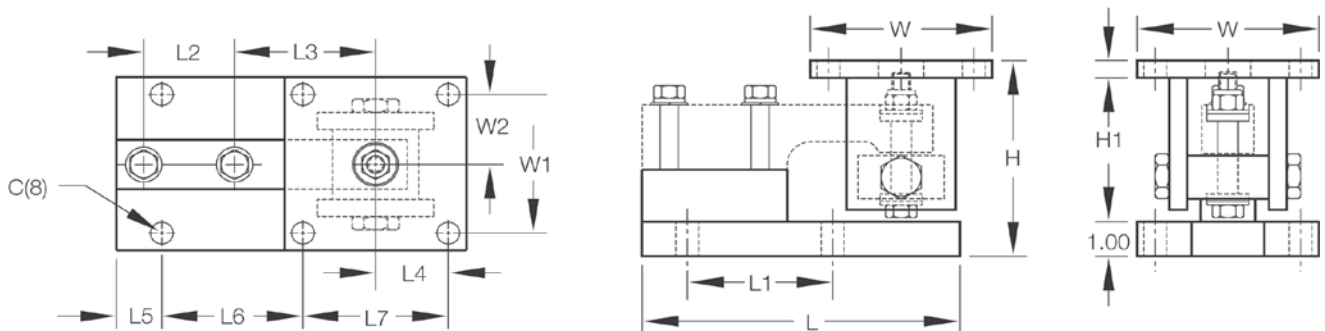


Order Information

| Load Rating (Per Module) | Part # | Price |
|---|--------------|---------|
| Single Module (Does NOT Include Load Cell) | | |
| 1,000 lb to 5,000 lb | 17841 | Consult |
| 10,000 lb | 17843 | Consult |
| 3-Module Kit | | |
| 1,000 lb | 18109 | Consult |
| 2,000 lb | 18110 | Consult |
| 5,000 lb | 18111 | Consult |
| 10,000 lb | 18112 | Consult |
| 4-Module Kit | | |
| 1,000 lb | 18113 | Consult |
| 2,000 lb | 18114 | Consult |
| 5,000 lb | 18115 | Consult |
| 10,000 lb | 18116 | Consult |

Dimensions

| Rated Capacity C | H Min/Max | H1 | L | L1 | L2 | L3 | L4 | L5 | L6 | L7 | W | W1 | W2 | |
|------------------|-----------|-----------|------|------|------|------|------|------|------|------|------|------|------|------|
| lb/in | | | | | | | | | | | | | | |
| 1,000 to 5,000 | 0.62 | 5.38/5.62 | 0.50 | 8.75 | 4.00 | 2.50 | 3.88 | 2.00 | 1.12 | 4.00 | 4.00 | 5.00 | 4.00 | 2.00 |
| 10,000 | 0.81 | 6.88/7.50 | 1.00 | 9.75 | 5.00 | 2.63 | 4.88 | 2.25 | 1.00 | 5.00 | 4.50 | 6.00 | 4.50 | 2.25 |



Complete Kit Includes

- One JB4SS NEMA Type 4X stainless steel signal trim junction box
- Three or four RL1900 stainless steel compression mounts
- Three or four RLSSB welded stainless steel single-ended beam load cells
- 25 ft of hostile environment EL147HE SURVIVOR® load cell cable

Standard Features

- NTEP Certified load cells, 1:5000d, Class III single cell
- Capacities (per module): 1,000 to 10,000lb
- 304 stainless steel construction
- Center-pivoted, tension loading design
- Welded-seal stainless steel load cells, IP67
- Self-checking, multi-directional movement
- Easy load cell replacement
- Load is suspended on high-strength bolt instead of wire rope
- Design incorporates spherical washers

Optional Features

- Also compatible with RTI SSB load cells

Applications

- Medium-capacity tanks, bins and hoppers
- Washdown applications

WEIGH MODULES