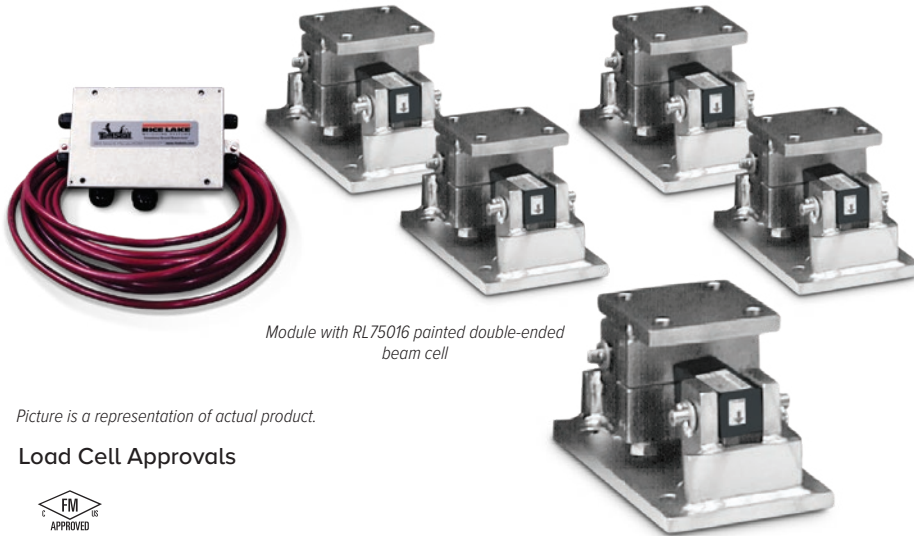


# RL1600 Series Painted Load Cell Version

Stainless Steel Weigh Modules



Module with RL75016 painted double-ended beam cell

Picture is a representation of actual product.

## Load Cell Approvals



## Order Information

Load Rating (Per Module)	Part #	Price
<b>Single Module (Does NOT Include Load Cell)</b>		
1,000 lb to 5,000 lb	17813	Consult
10,000 lb to 25,000 lb	17815	Consult
50,000 lb	17842	Consult
75,000 lb	25347	Consult
<b>3-Module Kit</b>		
1,000 lb	199023	Consult
1,500 lb	199025	Consult
2,000 lb	199027	Consult
2,500 lb	199029	Consult
3,000 lb	199031	Consult
5,000 lb	199033	Consult
10,000 lb	199035	Consult
15,000 lb	199037	Consult
20,000 lb	199038	Consult
25,000 lb	199040	Consult
50,000 lb	199042	Consult
75,000 lb	199044	Consult
<b>4-Module Kit</b>		
1,000 lb	199024	Consult
1,500 lb	199026	Consult
2,000 lb	199028	Consult
2,500 lb	199030	Consult
3,000 lb	199032	Consult
5,000 lb	199034	Consult
10,000 lb	199036	Consult
15,000 lb	199056	Consult
20,000 lb	199039	Consult
25,000 lb	199041	Consult
50,000 lb	199043	Consult
75,000 lb	199045	Consult

## Dimensions

Rated Capacity	C	H	H1	H2	L	L1	L2	L3	T	W	W1	W2	W3
1,000 to 5,000	0.56	5.00	0.50	0.50	9.25	2.75	4.00	6.25	1/2-13 UNC	5.00	3.75	2.75	4.00
10,000 to 25,000	0.78	7.87	0.75	0.75	12.00	6.00	8.00	7.50	3/4-10 UNC	8.00	6.00	6.00	8.00
50,000 to 75,000	0.78	9.25	1.00	1.00	16.25	6.50	9.00	11.50	1 1/4-7 UNC	12.00	9.50	6.50	9.00

## Complete Kit Includes

- One JB4SS NEMA Type 4X stainless steel signal trim junction box
- Three or four RL1600 stainless steel compression mounts
- Three or four RL75016 painted alloy steel double ended shear beam load cells
- 25 ft of hostile environment EL147HE SURVIVOR® load cell cable

## Standard Features:

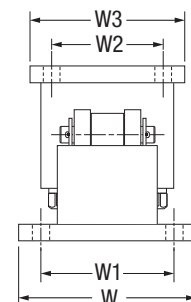
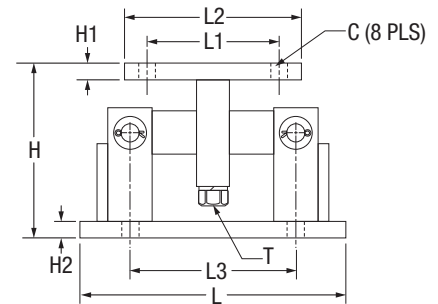
- Capacities (per module): 1,000 to 75,000 lb
- Self-checking, easy-to-use design allows module to be bolted directly to tank leg without requiring additional mounting plates or load buttons
- Environmentally protected load cells
- Double-ended shear beam design, center loaded

## Applications

- Medium-to heavy-capacity tanks, bins and hoppers
- Bulk material management

## Shims, Stainless

	Part #	Price
<b>1,000 lb to 5,000 lb</b>		
0.0625	150852	Consult
0.125	150853	Consult
0.250	150854	Consult
<b>10,000 lb to 25,000 lb</b>		
0.0625	150855	Consult
0.125	150856	Consult
0.250	150857	Consult
<b>50,000 lb to 75,000 lb</b>		
0.0625	150858	Consult
0.125	150859	Consult
0.250	150861	Consult



WEIGH MODULES