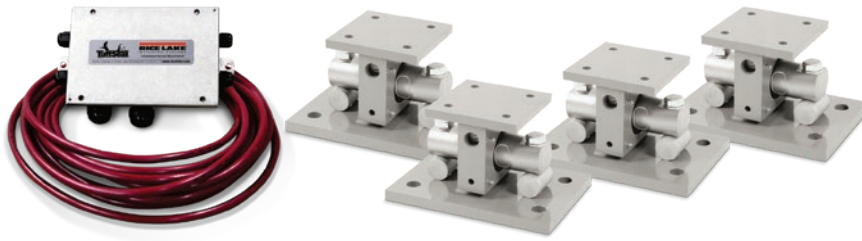
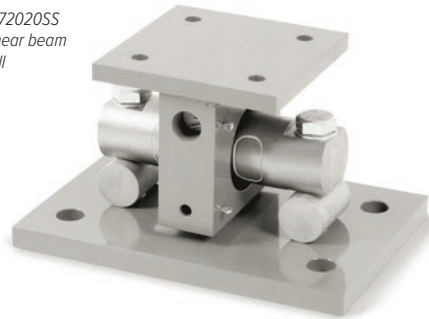


EZ Mount 1 SS with RL72020SS

Stainless Steel Weigh Modules, Rice Lake Weighing Systems



Module with RL72020SS double-ended shear beam load cell



Picture is a representation of actual product.

Load Cell Approvals



NTEP Excluding 5K and 150K

Complete Kit Includes

- One JB4SS NEMA Type 4X stainless steel signal trim junction box
- Three or four EZ Mount 1 stainless steel compression mounts
- Three or four RL72020SS stainless steel double-ended shear beam load cells
- 25 ft of our hostile environment EL147HE SURVIVOR® load cell cable

Standard Features

- Capacities (per module): 5,000 to 150,000 lb
- Unique sliding pin design compensates for thermal expansion/contraction
- Self-checking
- Easy load cell replacement
- Simplified design allows bolting directly to tank and floor
- Center-loaded double-ended shear beam design
- Low-profile design
- 304 stainless steel construction

Optional Features

- Kits available with VPG Revere 9103 load cell, capacities in 5,000 to 150,000 lb

Applications

- Medium to heavy-capacity tank and hopper weighing applications

Order Information

Load Rating (Per Module)	Part #	Price
Single Module (Does NOT Include Load Cell)		
5,000 lb to 20,000 lb	17943	Consult
30,000 lb to 60,000 lb	17944	Consult
100,000 lb	17945	Consult
150,000 lb	29011	Consult
3-Module Kit		
5,000 lb*	208914	Consult
10,000 lb	208917	Consult
20,000 lb	208918	Consult
30,000 lb	208919	Consult
40,000 lb	208920	Consult
50,000 lb	208921	Consult
60,000 lb	208922	Consult
100,000 lb	208923	Consult
150,000 lb*	208924	Consult

* Non-NTEP Certified

Load Rating (Per Module)	Part #	Price
4-Module Kit		
5,000 lb*	208925	Consult
10,000 lb	208926	Consult
20,000 lb	208927	Consult
30,000 lb	208928	Consult
40,000 lb	208929	Consult
50,000 lb	208930	Consult
60,000 lb	208931	Consult
100,000 lb	208932	Consult
150,000 lb*	208933	Consult
Dummy Load Cells (Mild Steel)		
5,000 lb to 20,000 lb	33749	Consult
30,000 lb to 60,000 lb	74016	Consult
100,000 lb	94175	Consult
150,000 lb	158715	Consult
Grounding Kit		
5,000 lb-60,000 lb	126419	Consult

Includes ground strap and mounting hardware per mount

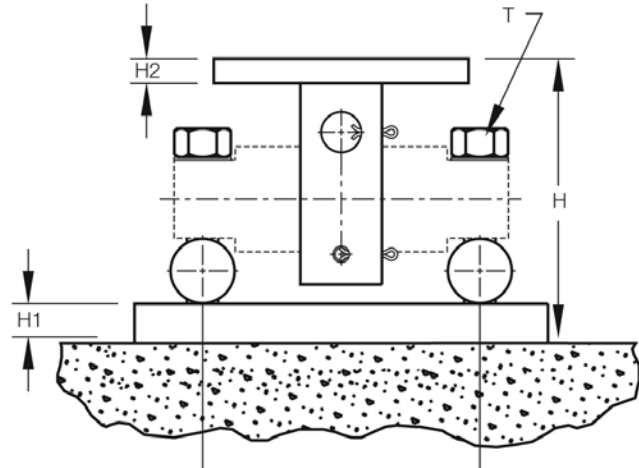
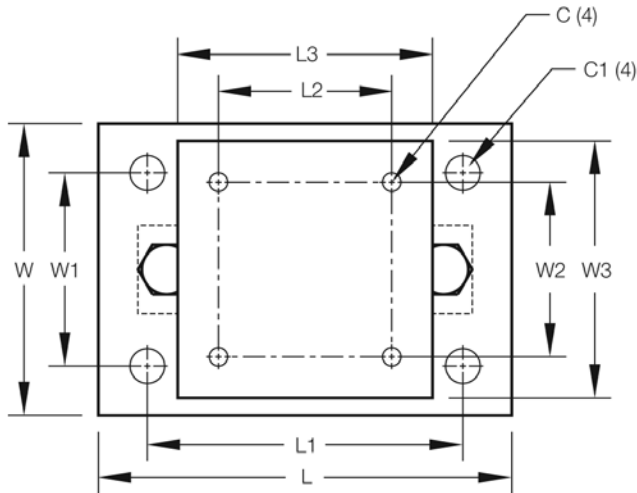
WEIGH MODULES

EZ Mount 1 SS with RL72020SS

Stainless Steel Weigh Modules, Rice Lake Weighing Systems

Dimensions

Rated Capacity	C	C1	H	H1	H2	L	L1	L2	L3	L4	T	W	W1	W2	W3
5,000 to 20,000	0.56	1.06	5.31	0.75	0.50	11.00	8.00	3.00	6.00	6.87	5/8-18 UNF	7.50	4.00	3.00	6.00
30,000 to 60,000	0.68	1.19	8.43	1.00	0.75	15.00	11.50	5.12	8.00	8.50	1-14 UNS	10.00	6.00	5.12	8.00
100,000 to 150,000	0.81	1.38	10.37	1.25	1.25	18.00	14.00	7.50	10.00	9.50	1-14 UNS	12.00	9.00	7.50	10.00



WEIGH MODULES