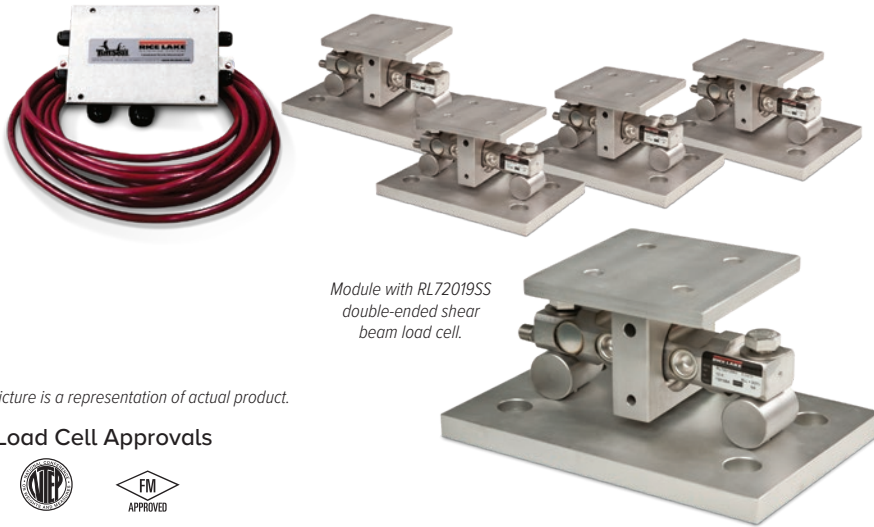


EZ Mount 1 HE

Stainless Steel Weigh Modules, Rice Lake Weighing Systems



Module with RL72019SS double-ended shear beam load cell.

Picture is a representation of actual product.

Load Cell Approvals



Order Information

Load Rating (Per Module)	Part #	Price
3-Module Kit		
5,000 lb*	46695	Consult
10,000 lb	46696	Consult
20,000 lb	46697	Consult
30,000 lb	46698	Consult
40,000 lb	46699	Consult
50,000 lb	46700	Consult
60,000 lb	46701	Consult
4-Module Kit		
5,000 lb*	46702	Consult
10,000 lb	46703	Consult
20,000 lb	46704	Consult
30,000 lb	46705	Consult
40,000 lb	46706	Consult
50,000 lb	46707	Consult
60,000 lb	46708	Consult
Dummy Load Cells (Mild Steel)		
5,000 lb to 20,000 lb	33749	Consult
30,000 lb to 60,000 lb	74016	Consult
Grounding Kit		
5,000 lb to 60,000 lb	126419	Consult

Includes ground strap and mounting hardware
*Non-NTEP

Shims

	Part #	Price
5,000 lb to 20,000 lb, Stainless Steel		
0.0625 in	150886	Consult
0.125 in	150888	Consult
0.250 in	150889	Consult
30,000 lb to 60,000 lb, Stainless Steel		
0.0625 in	150890	Consult
0.125 in	150891	Consult
0.250 in	150892	Consult
100,000 lb to 150,000 lb, Stainless Steel		
0.0625 in	150893	Consult
0.125 in	150894	Consult
0.250 in	150896	Consult
5,000 lb to 20,000 lb, Mild Steel		
0.0625 in	150874	Consult
0.125 in	150876	Consult
0.250 in	150877	Consult
30,000 lb to 60,000 lb, Mild Steel		
0.0625 in	150878	Consult
0.125 in	150880	Consult
0.250 in	150881	Consult
100,000 lb to 150,000 lb, Mild Steel		
0.0625 in	150882	Consult
0.125 in	150884	Consult
0.250 in	150885	Consult

Complete Kit Includes

- One JB4SS NEMA Type 4X stainless steel signal trim junction box
- Three or four EZ Mount 1 stainless steel compression mounts
- Three or four RL72019SS welded sealed stainless steel double-ended shear beam load cells
- 25 ft of our hostile environment EL147HE SURVIVOR® load cell cable

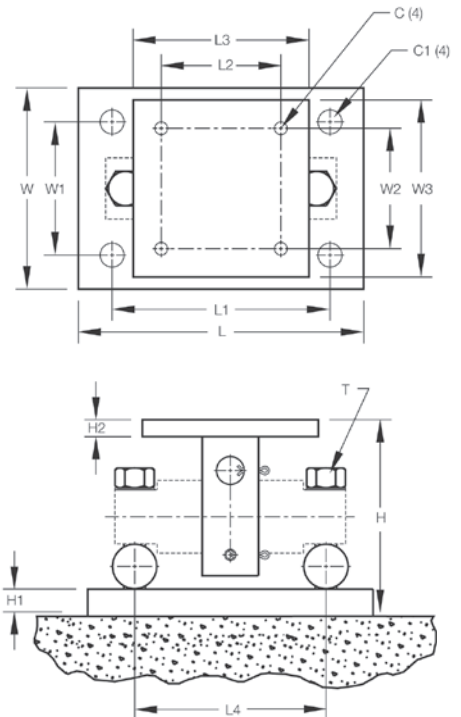
Standard Features

- Capacities (per module): 5,000 to 60,000 lb
- Unique sliding pin design compensates for thermal expansion/contraction
- Self-checking
- Easy load cell replacement
- Simplified design allows bolting directly to tank and floor
- Center-loaded, double-ended shear beam design
- Low-profile design
- 304 stainless steel construction

Applications

- Medium- to heavy-capacity tank and hopper weighing applications

WEIGH MODULES



Dimensions

Rated Capacity	C	C1	H	H1	H2	L	L1	L2	L3	L4	T	W	W1	W2	W3
5,000 to 20,000 lb/in	0.56	1.06	5.31	0.75	0.50	11.00	8.00	3.00	6.00	6.87	5/8-18 UNF	7.50	4.00	3.00	6.00
30,000 to 60,000	0.68	1.19	8.43	1.00	0.75	15.00	11.50	5.12	8.00	8.50	1-14 UNS	10.00	6.00	5.12	8.00

NOTES: Mounting bolts (T) may project on lower side of base plate. Foundation plate not included