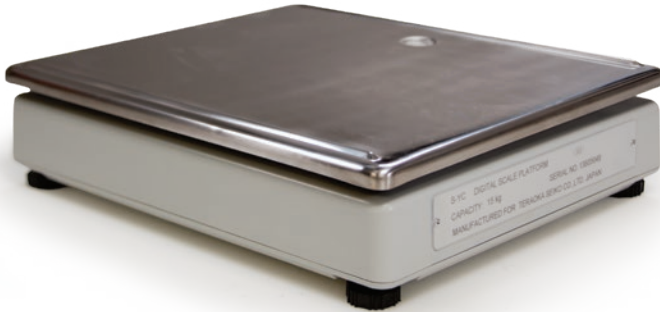


# DIGI® S-YC Series

Remote Scale Base Platforms



## Standard Features

- Stainless steel platter
- ABS injection-molded plastic base
- Single-point strain gauge load cell
- Adjustable legs
- Leveling bubble
- 14-pin connector on three-meter cable

## Specifications

### Output Impedance:

350 ±5 ohm

### Insulation Resistance:

>500 megohm

### Rated Output:

1.0016 mV/V

### Color Code:

Green +Output  
Yellow -Output  
Black Shield  
White -Input  
Red +Input

### Load Cell Type:

K-Type DIGI cell

### Load Cell Cable Length:

118 in (3 m)

### Operating Temperature:

14 °F to 104 °F (-10 °C to 40 °C)

### Warranty:

Two-year limited

## Part Number/Price

| Part # | Description   | Platter Dimensions            | Overall Dimensions                            | Est. Weight     | Price   |
|--------|---------------|-------------------------------|---|-----------------|---------|
| 154835 | 500 g (1 lb)  | 7.9 × 5.6 in (201 × 143 mm)   | 13.4 × 11.1 × 3.5 in<br>(341 × 284 × 90 mm)   | 7.7 lb (3.5 kg) | Consult |
| 154836 | 1 kg (2 lb)   | 9.6 × 6.9 in (244 × 177 mm)   | 13.4 × 11.1 × 3.5 in<br>(341 × 284 × 90 mm)   | 7.7 lb (3.5 kg) | Consult |
| 154838 | 2.5 kg (5 lb) | 13.4 × 11.1 in (341 × 284 mm) | 13.4 × 11.1 × 4.75 in<br>(341 × 284 × 120 mm) | 11 lb (5 kg)    | Consult |
| 154839 | 5 kg (10 lb)  | 13.4 × 11.1 in (341 × 284 mm) | 13.4 × 11.1 × 4.75 in<br>(341 × 284 × 120 mm) | 11 lb (5 kg)    | Consult |
| 154840 | 10 kg (20 lb) | 13.4 × 11.1 in (341 × 284 mm) | 13.4 × 11.1 × 4.75 in<br>(341 × 284 × 120 mm) | 11 lb (5 kg)    | Consult |
| 154841 | 25 kg (50 lb) | 13.4 × 11.1 in (341 × 284 mm) | 13.4 × 11.1 × 4.75 in<br>(341 × 284 × 120 mm) | 11 lb (5 kg)    | Consult |