



Picture is a representation of actual product

Approvals



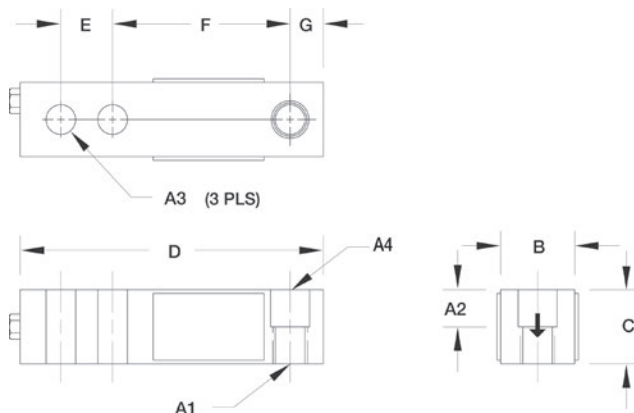
Order Information

Load Rating	Part #	Est. Weight	Price
NTEP Certified			
1,000 lb	30106	3 lb	Consult
2,000 lb	30109	3 lb	Consult
2,500 lb	30112	3 lb	Consult
3,000 lb	30113	3 lb	Consult
4,000 lb	30270	3 lb	Consult
5,000 lb SE	30114	3 lb	Consult
5,000 lb LE	30115	5 lb	Consult
10,000 lb	30117	5 lb	Consult
Non-NTEP Certified			
500 lb	30101	3 lb	Consult
15,000 lb	30118	9 lb	Consult
20,000 lb	30121	10 lb	Consult

SE=small envelope; LE=large envelope

Dimensions

Rated Capacity	A4	A2	A3	A1	B	C	D	E	F	G
lb/in										
500	0.53 dia	0.50	0.53	1/2-20 UNF	1.25	1.00	5.12	1.00	3.00	0.50
1,000 to 5,000 SE	0.53 dia	0.62	0.53	1/2-20 UNF	1.25	1.25	5.12	1.00	3.00	0.50
5,000 LE to 10,000	0.78 dia	0.75	0.78	3/4-16 UNF	1.50	1.50	6.75	1.50	3.75	0.75
15,000 to 20,000	1.03 dia	1.00	1.03	1-14 UNS	2.00	2.00	8.88	2.00	4.88	1.00



Interchangeable Products

VPG® SENSORTRONICS
65023A..... page 281

Weigh Module Available

RICE LAKE WEIGHING SYSTEMS
RL50210TA..... page 31
RICE LAKE WEIGHING SYSTEMS
RL1800 Series..... page 42

Specifications

- Full Scale Output:** 3.0 mV/V
- Output Resistance:** 350 (± 3) ohm
- Input Resistance:** 385 (± 5) ohm
- Material/Finish:** High-alloy steel, nickel plated
- Temperature:** Compensated range 14 °F to 104 °F (-10 °C to 40 °C)
Operating range 0 °F to 150 °F (-18 °C to 65 °C)
- Seal Type:** Environmentally sealed, IP67
- Safe Overload:** 150% full scale
- Safe Sideload:** 100% full scale
- Rated Excitation:** 5 to 10 VDC (15 V maximum)
- Combined Error:** 0.02% full scale
- Insulation Resistance:** 5,000 megohm
- Deflection at Capacity:** 500 to 1,000 lb: 0.013 in
2,000 to 3,000 lb: 0.015 in
4,000 to 5,000 lb: 0.025 in
10,000 lb: 0.035 in
- Cable Length:** 20 ft
- Cable Diameter:** 0.200 in
Polyurethane jacket
- Cable Color Code:** Red +Excitation
Black -Excitation
Green +Signal
White -Signal
- Warranty:** One-year limited
- Approvals:** cFMus
NTEP