



Picture is a representation of actual product

Approvals

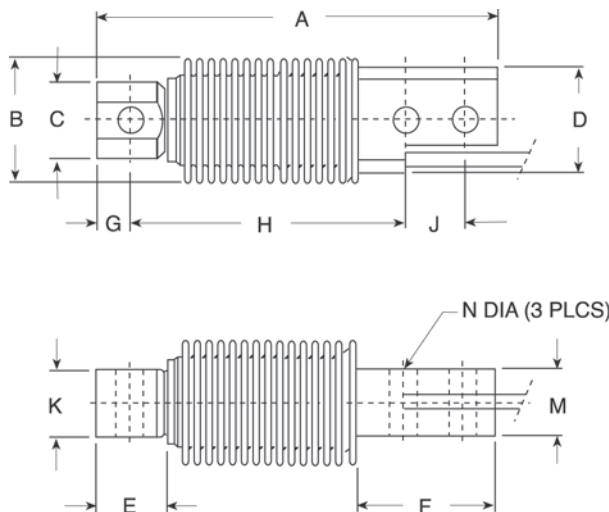


Order Information

Load Rating	Part #	Est. Weight	Price
20 kg	28801	2 lb	Consult
50 kg	28802	2 lb	Consult
100 kg	28803	2 lb	Consult
200 kg	28804	2 lb	Consult

Dimensions

Rated Capacity	A	B	C	D	E	F	G	H	J	K	M	N
kg/mm												
20 to 200	120.0	38.0	22.9	31.7	21.2	42.0	10.0	82.0	18.0	20.0	20.0	8.20



Interchangeable Products

- RICE LAKE WEIGHING SYSTEMS
RLHBB
 HBK®
Z6 page 226
 VPG® TEDEA-HUNTLEIGH
355 page 309

Specifications

- Full Scale Output:** 2.0 mV/V
- Output Resistance:** 350 (± 3.5) ohm
- Input Resistance:** 460 (± 3.5) ohm
- Material/Finish:** Stainless steel
- Temperature:** Compensated range 14 °F to 104 °F (-10 °C to 40 °C)
Operating range 0 °F to 150 °F (-18 °C to 65 °C)
- Seal Type:** Welded-seal, IP67
- Safe Overload:** 150% full scale
- Rated Excitation:** 5 to 10 VDC (15 V maximum)
- Combined Error:** 0.02% full scale (SHB-A3)
- Non-repeatability:** 0.01% full scale
- Insulation Resistance:** 5,000 megohm
- Deflection at Capacity:** 0.4 mm
- Cable Length:** 10 ft
- Cable Color Code:** Green +Excitation
Black -Excitation
White +Signal
Red -Signal
- Warranty:** One-year limited
- Approvals:** cFMus
NTEP