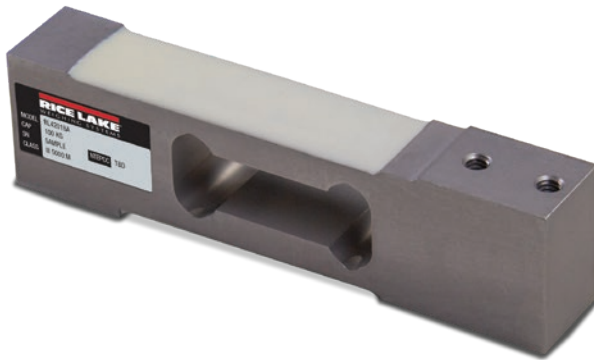


SINGLE POINT  
**RL42018A**

Aluminum, Environmentally Sealed, NTEP Certified 1:5,000 Class III Single Cell, IP66



Picture is a representation of actual product.

Approvals

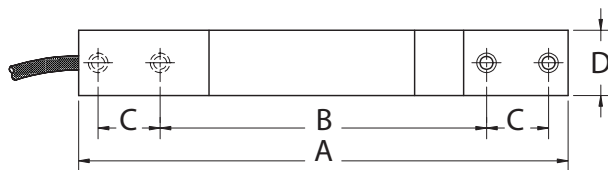
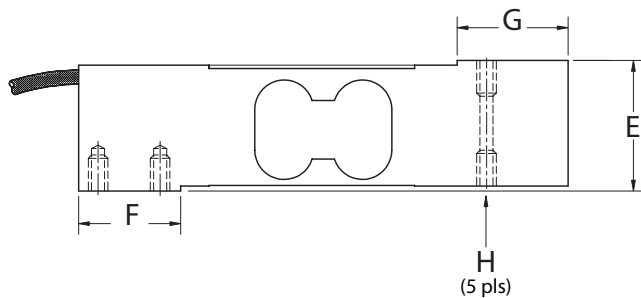


Order Information

Load Rating	Part #	Est. Weight	Price
3 kg	<b>188672</b>	2 lb	Consult
5 kg	<b>188673</b>	2 lb	Consult
7 kg	<b>188674</b>	2 lb	Consult
10 kg	<b>188675</b>	2 lb	Consult
15 kg	<b>188676</b>	2 lb	Consult
20 kg	<b>188677</b>	2 lb	Consult
30 kg	<b>188678</b>	2 lb	Consult
50 kg	<b>188679</b>	2 lb	Consult
75 kg	<b>188680</b>	2 lb	Consult
100 kg	<b>188681</b>	2 lb	Consult

Dimensions

Rated Capacity	A	B	C	D	E	F	G	H
kg/mm								
3 to 30	150.0	100.0	19.0	20.0	40.0	31.2	34.0	1/4-20 UNC
50 to 100	150.0	100.0	19.0	25.4	40.0	31.2	34.0	1/4-20 UNC



Interchangeable Products

- RICE LAKE WEIGHING SYSTEMS  
**RL1042**.....page 161
- RICE LAKE WEIGHING SYSTEMS  
**RLSP4**.....page 158
- VPG® TEDEA-HUNTLEIGH®  
**1042**.....page 313
- HBK®  
**SP4M\***.....page 228

\*Color code is different

Specifications

- Full Scale Output:**  
2.0 mV/V ±10%
- Output Resistance:**  
350 (± 3) ohm
- Input Resistance:**  
400 (± 20) ohm
- Material/Finish:**  
Aluminum
- Temperature:**  
Compensated range  
14 °F to 104 °F/-10 °C to 40 °C  
Operating range  
0 °F to 150 °F/-18 °C to 65 °C
- Seal Type:**  
Environmentally sealed, IP66
- Safe Overload:**  
150% of full scale at center loading point
- Rated Excitation:**  
10 VDC
- Combined Error:**  
0.02% full scale
- Insulation Resistance:**  
>5,000 megohm
- Deflection:**  
0.3 to 0.5 mm
- Cable Length:**  
10 ft
- Cable Color Code:**  
Green +Excitation  
Black -Excitation  
Red +Signal  
White -Signal  
Blue +Sense  
Yellow -Sense
- Platform Size:**  
15.75 × 15.75 in max
- Warranty:**  
Two-year limited
- Approvals:**  
cFMus  
NTEP 18-105

RICE LAKE  
LOAD CELLS