

Picture is a representation of actual product.

Approvals

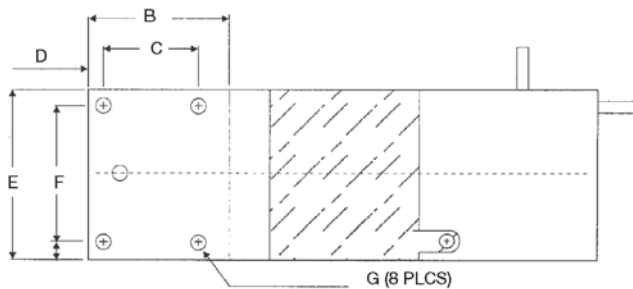
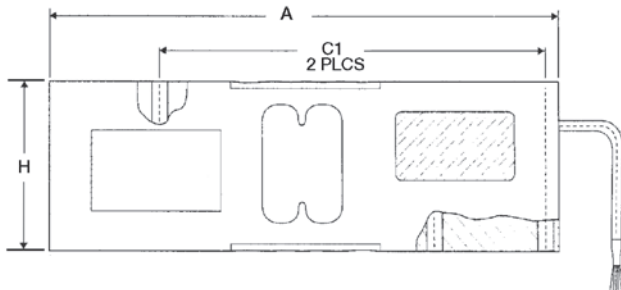


Order Information

Load Rating	Part #	Est. Weight	Price
50 kg	188682	5 lb	Consult
75 kg	188683	5 lb	Consult
100 kg	188684	5 lb	Consult
150 kg	188685	5 lb	Consult
200 kg	188686	5 lb	Consult
250 kg	188687	5 lb	Consult
300 kg	188688	5 lb	Consult
500 kg	188689	5 lb	Consult
635 kg	188690	5 lb	Consult

Dimensions

Rated Capacity	A	B	C	C1	D	E	F	G	H
kg/mm									
50 to 635	188.0	52.0	35.0	142.0	5.5	63.5	50.0	5/16-18 UNC	62.3



Interchangeable Products

RICE LAKE WEIGHING SYSTEMS

RL1260

RICE LAKE WEIGHING SYSTEMS

RLPWM16

VPG® TEDEA-HUNTLEIGH®

1260

Specifications

Full Scale Output:

2.0 mV/V nominal

Output Resistance:

350 (± 3) ohm

Input Resistance:

415 (± 15) ohm

Material/Finish:

Anodized aluminum

Temperature:

Compensated range

14 °F to 104 °F (-10 °C to 40 °C)

Operating range

0 °F to 150 °F (-18 °C to 65 °C)

Seal Type:

Environmentally sealed, IP67

Safe Overload:

150% of full scale

Rated Excitation:

5 to 10 VDC (15 V maximum)

Insulation Resistance:

>5,000 megohm

Combined Error:

0.02% full scale

Deflection:

0.3 to 0.5 mm

Cable Length:

10 ft

Cable Color Code:

Green +Excitation

Black -Excitation

Red +Signal

White -Signal

Blue +Sense

Yellow -Sense

Warranty:

Two-year limited

Approvals:

cFMus

NTEP 18-108

LOAD CELLS /
WEIGH MODULES