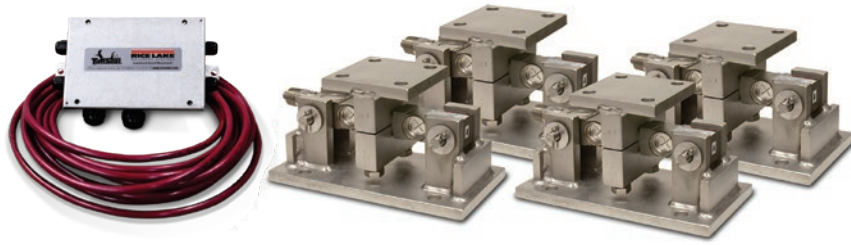


RL1600 HE

Medium-capacity Weigh Modules



Picture is a representation of actual product.

Complete Kit Includes

- One JB4SS NEMA Type 4X stainless steel signal trim junction box
- Three or four RL1600 HE stainless steel compression mounts
- Three or four RL75016WHE stainless steel, hermetically sealed double-ended shear beam load cells
- 25 ft of our hostile environment EL147HE SURVIVOR load cell cable

Standard Features

- Capacities (per module): 1,000 to 25,000lb
- All stainless steel construction
- Self-checking, easy-to-use design allows module to be bolted directly to tank leg without requiring additional mounting plates or load buttons
- Hermetically sealed IP66/69K protected load cells
- Double-ended shear beam design, center loaded

Applications

- Medium-capacity tanks, bins and hoppers
- Bulk material management
- Ingredient batching, mixing and blending

Load Cell Approvals



SURVIVOR
WEIGH MODULES

Order Information

Load Rating (Per Module)	Part #	Price
Single Module (Does Not Include Load Cell)		
1,000 to 5,000 lb	17813	Consult
10,000 to 25,000 lb	17815	Consult
3-Module Kit		
1,000 lb	46723	Consult
1,500 lb	119673	Consult
2,000 lb	119675	Consult
2,500 lb	46724	Consult
5,000 lb	46725	Consult
10,000 lb	46726	Consult
15,000 lb	46727	Consult
20,000 lb	84664	Consult
25,000 lb	46728	Consult
4-Module Kit		
1,000 lb	46729	Consult
1,500 lb	119674	Consult
2,000 lb	119676	Consult
2,500 lb	46730	Consult
5,000 lb	46731	Consult
10,000 lb	46732	Consult
15,000 lb	46733	Consult
20,000 lb	84665	Consult
25,000 lb	46734	Consult
Dummy Load Cells (Mild Steel)		
1,000 to 5,000 lb	18236	Consult
10,000 to 25,000 lb	18237	Consult

Shims*

	Part #	Price
1,000 lb to 5,000 lb		
0.0625	150852	Consult
0.125	150853	Consult
0.250	150854	Consult
10,000 lb to 25,000 lb		
0.0625	150855	Consult
0.125	150856	Consult
0.250	150857	Consult
50,000 lb to 75,000 lb		
0.0625	150858	Consult
0.125	150859	Consult
0.250	150861	Consult

*Shims match the top plate

Dimensions

Rated Capacity	C	H	H1	H2	L	L1	L2	L3	T	W	W1	W2	W3
1,000 to 5,000 lb/in	0.56	5.00	0.50	0.50	9.25	2.75	4.00	6.25	1/2-13 UNC	5.00	3.75	2.75	4.00
10,000 to 25,000	0.78	7.87	0.75	0.75	12.00	6.00	8.00	7.50	3/4-10 UNC	8.00	6.00	6.00	8.00

