



Picture is a representation of actual product.

Approvals

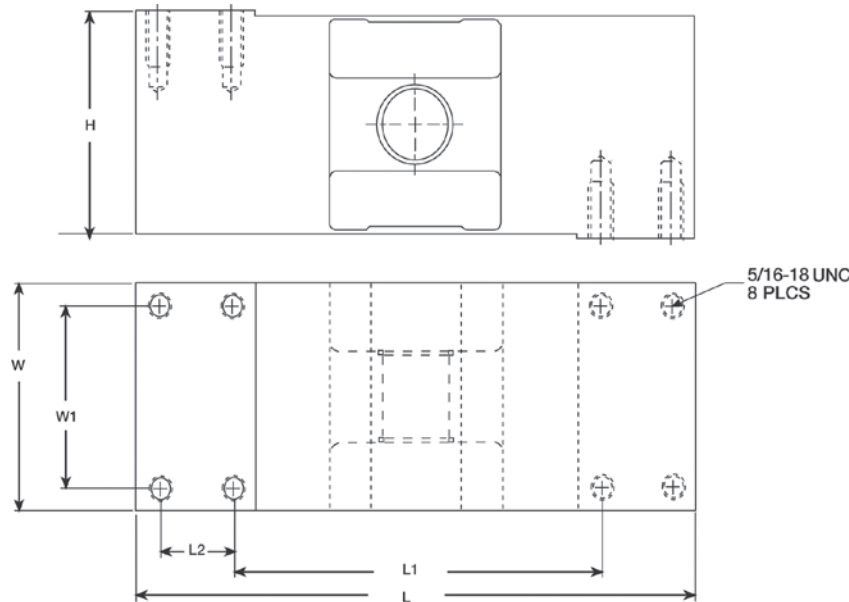


Order Information

Load Rating	Part #	Est. Weight	Price
50 kg	45274	15 lb	Consult
100 kg	45275	15 lb	Consult
250 kg	45276	15 lb	Consult
500 kg	45277	15 lb	Consult
1,000 kg	45278	15 lb	Consult
Options			
Conduit adapter, 1/2-14 NPT	17703	1 lb	Consult

Dimensions

Rated Capacity	L	L1	L2	W	W1	H
kg/mm						
50 to 1,000	190.5	124.8	24.9	74.9	59.9	74.9



Interchangeable Products

- RICE LAKE WEIGHING SYSTEMS
RLPWM12.....page 159
- RICE LAKE WEIGHING SYSTEMS
RL1250*
- VPG TEDEA-HUNTLEIGH®
1250* page 322

* Environmentally sealed

Specifications

Full Scale Output:

2.0 mV/V

Output Resistance:

960 (± 50) ohm

Input Resistance:

1,100 (± 50) ohm

Material/Finish:

Stainless steel

Temperature:

Compensated range

14 °F to 104 °F (-10 °C to 40 °C)

Operating range

0 °F to 150 °F (-18 °C to 65 °C)

Seal Type:

Hermetically sealed, IP69K

Safe Overload:

200% full scale

Safe Sideload:

100% full scale

Rated Excitation:

5 to 10 VDC (20 V maximum)

Combined Error:

0.02% full scale

Insulation Resistance:

5,000 megohm

Deflection at Capacity:

0.015 in

Cable Length:

10 ft

Cable Diameter:

0.196 in

Polyurethane jacket

Cable Color Code:

Green +Excitation

Black -Excitation

White +Signal

Red -Signal

Yellow Shield

Max Platform Size:

39 × 39 in

Warranty:

One-year limited

Approvals:

FM

NTEP

OIML