



Picture is a representation of actual product.

Approvals

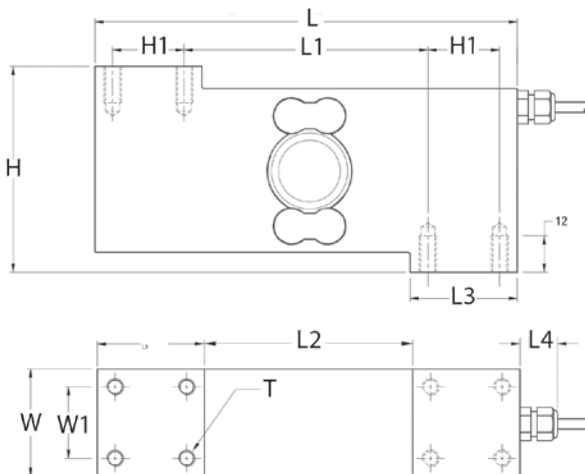


Order Information

Load Rating	Part #	Est. Weight	Price
100 kg	161719	6 lb	Consult
250 kg	161720	6 lb	Consult
500 kg	161721	6 lb	Consult

Dimensions

Rated Capacity	H	H1	L	L1	L2	L3	L4	W	W1	T
kg/in										
100 to 500	2.88	1.00	5.91	3.41	2.92	1.50	0.63	1.50	1.00	M8



Interchangeable Products

VPG TEDEA-HUNTLEIGH®

1510..... page 324

Specifications

Full Scale Output:

2 mV/V ±5%

Output Resistance:

350 (± 10) ohm

Input Resistance:

380 (± 20) ohm

Material/Finish:

Stainless steel construction with electro-polished finish

Temperature:

Operating range
0 °F to 150 °F (-18 °C to 65 °C)

Seal Type:

Hermetically sealed, IP69K

Safe Overload:

150% full scale

Rated Excitation:

5 to 15 VDC

Insulation Resistance:

5,000 megohm

Max Platform Size:

Up to 600 × 600 mm

Cable Length:

3 m

Cable Color Code:

- Green +Excitation
- Black -Excitation
- White +Signal
- Red -Signal
- Blue +Sense
- Brown -Sense
- Yellow Shield

Warranty:

One-year limited

Approvals:

OIML