

Stainless Steel, Hermetically Sealed, NTEP Certified 1:10,000 Class III Multiple Cell/OIML, IP68



Picture is a representation of actual product.

Approvals

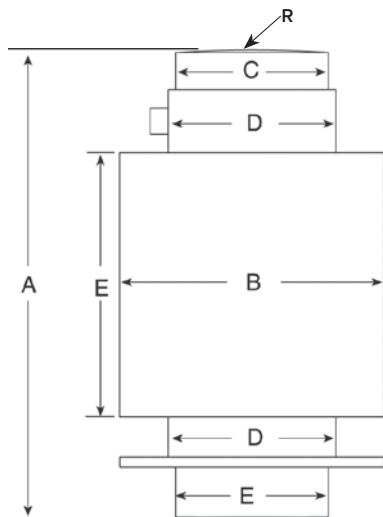


Order Information

Load Rating	Part #	Est. Weight	Price
OIML C3			
20t	69312	6 lb	Consult
30t	69313	6 lb	Consult
40t	69314	10 lb	Consult
60t	125266	10 lb	Consult
NTEP Certified			
20t	106149	6 lb	Consult
30t	106150	6 lb	Consult
40t	106151	10 lb	Consult
60t	125265	10 lb	Consult

Dimensions

Rated Capacity	A	B	C	D	E	R
t/mm						
20	150.0	76.1	44.0	48.0	44.0	130.0
30	150.0	76.1	44.0	48.0	44.0	160.0
40	150.0	76.1	44.0	48.0	44.0	180.0
60	210.0	76.1	44.0	48.0	44.0	220.0



Specifications

Full Scale Output:2 mV/V \pm 1%**Output Resistance:**706 (\pm 3.5) ohm**Input Resistance:**700 (\pm 20) ohm**Material/Finish:**

Stainless steel

Temperature:

Compensated range

14 °F to 104 °F (-10 °C to 40 °C)

Operating range

0 °F to 150 °F (-18 °C to 65 °C)

Seal Type:

Hermetically sealed, IP68

Safe Overload:

130% full scale

Rated Excitation:

5 to 10 VDC (15 V maximum)

Combined Error:

0.03% full scale

Insulation Resistance:

5,000 megohm

Cable Length:

12 m

Cable Diameter:

0.190 in

Polyurethane jacket

Cable Color Code:

Blue +Excitation

Black -Excitation

White +Signal

Red -Signal

Green +Sense

Grey -Sense

Warranty:

One-year limited

Approvals:

NTEP

OIML