



Picture is a representation of actual product

Approvals



Order Information

Load Rating	Part #	Est. Weight	Price
3 kg	Consult	7 lb	Consult
5 kg	Consult	7 lb	Consult
7 kg	Consult	7 lb	Consult
10 kg	Consult	7 lb	Consult
15 kg	Consult	7 lb	Consult
20 kg	Consult	7 lb	Consult
30 kg	Consult	7 lb	Consult
50 kg	Consult	7 lb	Consult

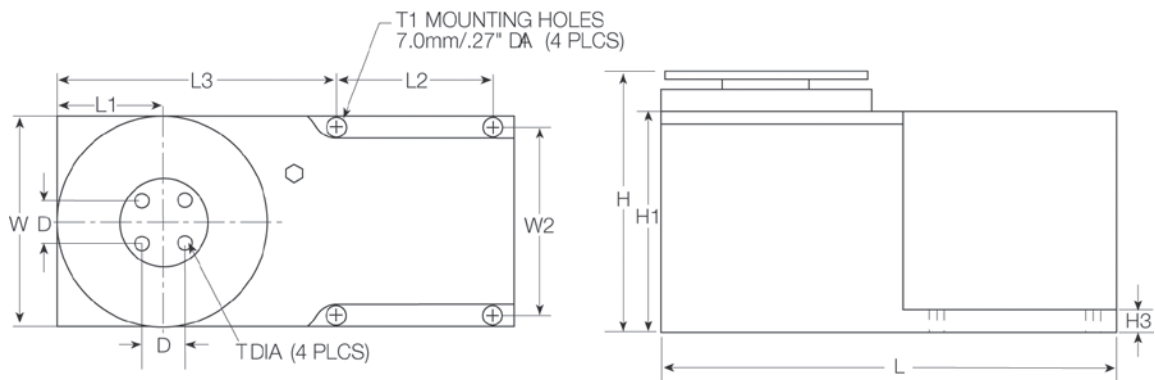
Note: The special fluid damped operation is particularly well-suited for applications where quick weightment is required, e.g., checkweighers

9010 load cells are custom-manufactured per specific application requirements; use the Application Definition Form on page 330 of this section as well as online at www.ricelake.com/questionnaires to define your applications

Available in stainless steel with breather vent option for washdown applications

Dimensions

Rated Capacity	D	H	H1	H3	L	L1	L2	L3	T	W	W2
kg/mm											
3 to 50	19.1	115.2	97.3	10.0	199.5	46.0	71.5	119.8	1/4-20 UNC x 20 DP	92.0	82.0



Specifications

Full Scale Output:
2.0 mV/V

Output Resistance:
350 (± 5) ohm

Input Resistance:
415 (± 15) ohm

Material/Finish:
Aluminum

Temperature:
Operating range
0 °F to 150 °F (-18 °C to 65 °C)

Seal Type:
Environmentally sealed, IP65

Safe Overload:
800% full scale downward,
400% full scale upward

Rated Excitation:
15 VDC (15 V maximum)

Combined Error:
0.03% full scale

Insulation Resistance:
5,000 megohm

Cable Length:
3 ft

Cable Diameter:
0.370 in PVC jacket

Cable Color Code:
Green +Excitation
Black -Excitation
Red +Signal
White -Signal
Blue +Sense
Brown -Sense

Warranty:
One-year limited

Approvals:
cFMus