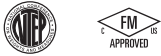




Picture is a representation of actual product

Approvals

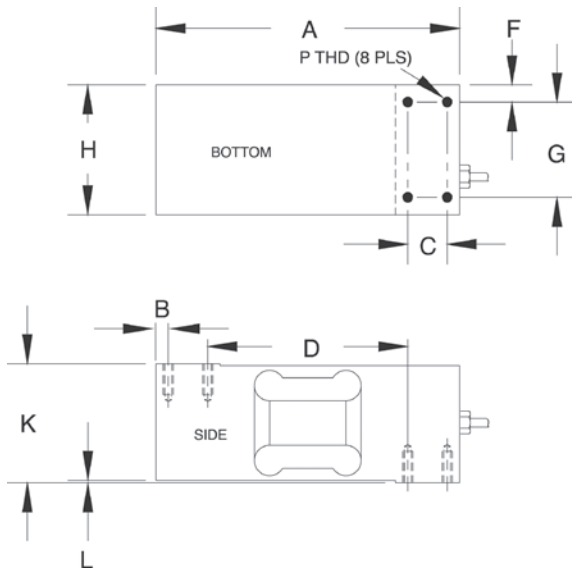


Order Information

Load Rating	Part #	Est. Weight	Price
NTEP Certified			
250 lb	17582	6 lb	Consult
300 lb	112689	6 lb	Consult
500 lb	17583	6 lb	Consult
750 lb	17584	6 lb	Consult
1,000 lb	17585	6 lb	Consult
2,000 lb	17586	6 lb	Consult
Non-NTEP Certified			
100 lb	36479	6 lb	Consult
150 lb	112688	6 lb	Consult

Dimensions

Rated Capacity	A	B	C	D	F	G	H	K	L	P
lb/in										
100 to 2,000	7.50	0.31	0.98	4.92	0.30	2.36	2.95	2.95	0.06	5/16-18-UNC x 0.75 DP



Specifications

- Full Scale Output:**
2.0 mV/V
- Output Resistance:**
349 to 355 ohm
- Input Resistance:**
400 nominal ohm
- Material/Finish:**
Aluminum, clear anodized
- Temperature:**
Compensated range
14 °F to 104 °F (-10 °C to 40 °C)
Operating range
0 °F to 150 °F (-18 °C to 65 °C)
- Seal Type:**
Environmentally sealed, IP67
- Safe Overload:**
150% full scale
- Safe Sideload:**
100% full scale
- Rated Excitation:**
5 to 10 V DC (15 V maximum)
- Max. Platform Size:**
30 x 30 in
- Combined Error:**
0.02% full scale
- Insulation Resistance:**
5,000 megohm
- Deflection at Capacity:**
100 to 250 lb: 0.010 in
500 to 2,000 lb: 0.006 in
- Cable Length:**
10 ft
- Cable Diameter:**
0.200 in
Polyurethane jacket
- Cable Color Code:**
Red +Excitation
Black -Excitation
Green +Signal
White -Signal
- Warranty:**
One-year limited
- Approvals:**
cFMus
NTEP