



Picture is a representation of actual product

Approvals

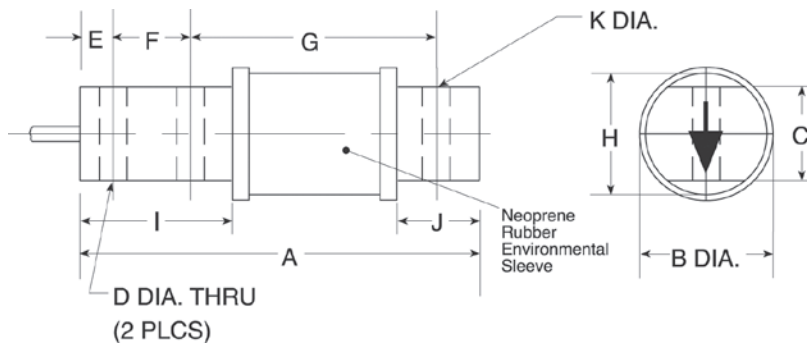


Order Information

Load Rating	Part #	Est. Weight	Price
50 lb	21709	2 lb	Consult
100 lb	21710	2 lb	Consult
200 lb	21711	2 lb	Consult
500 lb	21712	2 lb	Consult
1,000 lb	21713	2 lb	Consult
2,500 lb	21714	2 lb	Consult

Dimensions

Rated Capacity	A	B	C	D	E	F	G	H	I	J	K
lb/in											
50 to 200	5.00	1.25	0.75	0.27	0.38	0.62	3.50	1.23	1.50	1.25	0.39
500 to 1,000	5.38	1.25	0.75	0.41	0.62	1.00	3.25	1.23	2.07	1.20	0.41
2,500	5.38	1.25	0.75	0.41	0.62	1.00	3.25	1.23	2.07	1.20	0.53



Interchangeable Products

VPG® REVERE

9102 page 250

Specifications

Full Scale Output:

2.0 mV/V

Output Resistance:

350 (± 3.5) ohm

Input Resistance:

350 (± 3.5) ohm

Material/Finish:

High-alloy steel, nickel plated

Temperature:

Operating range

0 °F to 150 °F (-18 °C to 65 °C)

Seal Type:

Environmentally sealed with neoprene sleeve, IP67

Safe Overload:

150% full scale

Rated Excitation:

5 to 10 VDC (15 V maximum)

Combined Error:

0.03% full scale

Non-repeatability:

0.01% full scale

Insulation Resistance:

5,000 megohms

Deflection at Capacity:

50 to 200 lb: 0.020 in

500 to 2,500 lb: 0.026 in

Cable Length:

10 ft

Cable Color Code:

Red +Excitation

Black -Excitation

Green +Signal

White -Signal

Warranty:

One-year limited

Approvals:

cFMus