

Picture is a representation of actual product

Approvals



Available upon request

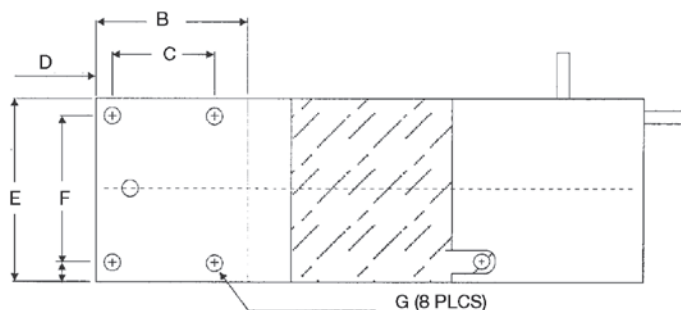
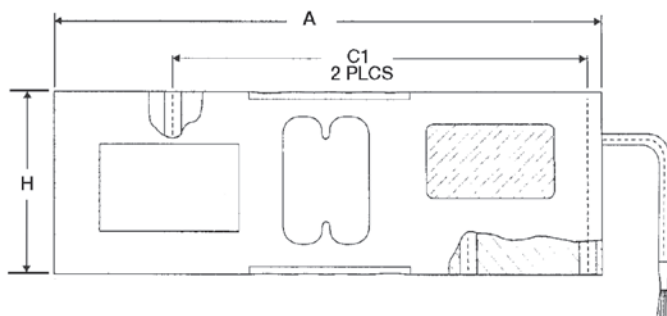
Available upon request

Order Information

Load Rating	Part #	Est. Weight	Price
50 kg	40769	5 lb	Consult
75 kg	40770	5 lb	Consult
100 kg	40771	5 lb	Consult
150 kg	159005	5 lb	Consult
200 kg	40772	5 lb	Consult
250 kg	40773	5 lb	Consult
300 kg	40774	5 lb	Consult
500 kg	40775	5 lb	Consult
635 kg	40776	5 lb	Consult

Dimensions

Rated Capacity	A	B	C	C1	D	E	F	G	H
kg/mm									
50 to 635	188.0	52.0	35.0	142.0	5.5	62.3	50.0	5/16-18 UNC	62.3



Interchangeable Products

- RICE LAKE WEIGHING SYSTEMS
RL1260 page 166
- RICE LAKE WEIGHING SYSTEMS
RLPWM16..... page 160
- VPG® TEDEA-HUNTLEIGH
1260S..... page 320

Specifications

- Full Scale Output:**
2.0 mV/V
- Output Resistance:**
350 (± 3) ohm
- Input Resistance:**
415 (± 15) ohm
- Material/Finish:**
Anodized aluminum
- Temperature:**
Compensated range
14 °F to 104 °F (-10 °C to 40 °C)
Operating range
0 °F to 150 °F (-18 °C to 65 °C)
- Seal Type:**
Environmentally sealed, IP67
- Safe Overload:**
150% of full scale at center loading point
- Rated Excitation:**
5 to 10 VDC (15 V maximum)
- Combined Error:**
0.02% full scale
- Insulation Resistance:**
2,000 megohm
- Cable Length:**
10 ft
- Cable Diameter:**
0.220 in
Polyurethane jacket
- Cable Color Code:**
Green +Excitation
Black -Excitation
Red +Signal
White -Signal
Blue +Sense
Brown -Sense
- Max Platform Size:**
24 × 24 in
- Warranty:**
One-year limited
- Approvals:**
cFMus
NTEP
Ex (Available upon request)
OIML (Available upon request)

VPG
TEDEA-HUNTLEIGH