



Picture is a representation of actual product

### Approvals

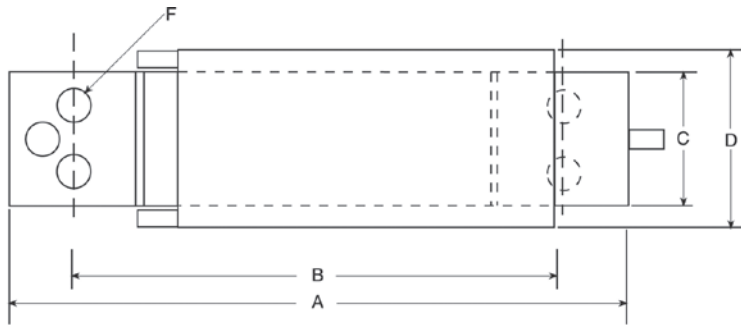


### Order Information

| Load Rating | Part # | Est. Weight | Price   |
|-------------|--------|-------------|---------|
| 3 kg        | 47882  | 1 lb        | Consult |
| 5 kg        | 47883  | 1 lb        | Consult |
| 7 kg        | 47884  | 1 lb        | Consult |
| 10 kg       | 47885  | 1 lb        | Consult |

### Dimensions

| Rated Capacity | A     | B    | C    | D    | E    | F                |
|----------------|-------|------|------|------|------|------------------|
| kg/mm          |       |      |      |      |      |                  |
| 3 to 10        | 117.9 | 93.7 | 25.4 | 33.3 | 32.5 | 1/4-20UNC x 10DP |



### Specifications

**Full Scale Output:**

2.0 mV/V

**Output Resistance:**

350 (± 3) ohm

**Input Resistance:**

415 (± 15) ohm

**Material/Finish:**

Anodized aluminum

**Temperature:**

Operating range  
0 °F to 150 °F (-18 °C to 65 °C)

**Seal Type:**

Environmentally sealed, IP65

**Safe Overload:**

150% full scale

**Rated Excitation:**

5 to 10 VDC (15 V maximum)

**Combined Error:**

0.02% full scale

**Insulation Resistance:**

5,000 megohm

**Deflection at Capacity:**

0.015 in

**Cable Length:**

1 m

**Cable Diameter:**

0.200 in PVC jacket

**Cable Color Code:**

Green +Excitation  
Black -Excitation  
Red +Signal  
White -Signal  
Blue +Sense  
Brown -Sense

**Platform Size:**

13.78 x 13.78 in

**Warranty:**

One-year limited

**Approvals:**

cFMus  
OIML