

RL75016 Painted

Alloy Steel, Environmentally Sealed, IP67



Picture is a representation of actual product.

Approvals



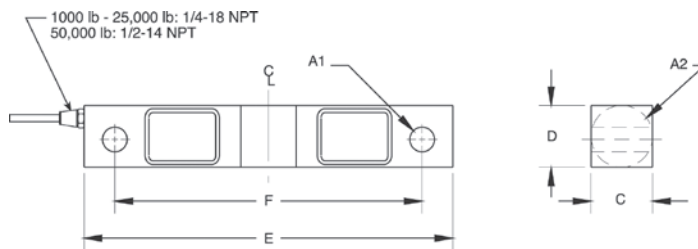
Order Information

Load Rating	Part #	Est. Weight	Price
1,000 lb	187058	4 lb	Consult
1,500 lb	187059	4 lb	Consult
2,000 lb	187060	4 lb	Consult
2,500 lb	187061	4 lb	Consult
3,000 lb	187062	4 lb	Consult
5,000 lb	187063	4 lb	Consult
10,000 lb	187064	7 lb	Consult
15,000 lb	187065	7 lb	Consult
20,000 lb	187066	7 lb	Consult
25,000 lb	187067	7 lb	Consult
50,000 lb	187068	25 lb	Consult
75,000 lb*	187069	25 lb	Consult

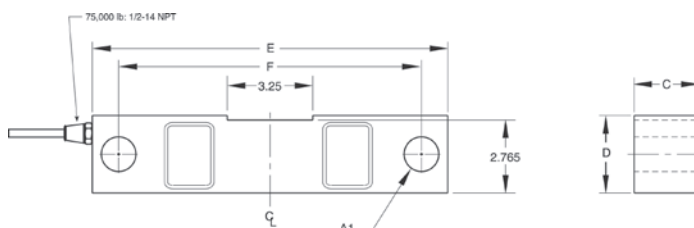
*75,000lb capacity has a square center

Dimensions

Rated Capacity	A1	A2	C	D	E	F
lb/in						
1,000 to 5,000	0.50	1.25	1.25	1.25	7.50	6.25
10,000 to 25,000	0.81	1.99	1.44	1.94	8.75	7.50
50,000	1.31	3.00	2.44	2.94	13.50	11.50
75,000	1.31	—	2.44	2.94	13.50	11.50



1000-50,000lb



75,000lb

Interchangeable Products

RICE LAKE WEIGHING SYSTEMS

RL75016* (Alloy).....page 131

VPG® CELTRON

DSR* (Alloy)page 195

VPG® SENSORTRONICS®

65016* (Alloy).....page 290

Weigh Module Available

RICE LAKE WEIGHING SYSTEMS

RL1600 Series page 67 and page 69

*Cells are unpainted

Specifications

Full Scale Output:

3.0 mV/V

Output Resistance:

700 (± 5) ohm

Input Resistance:

770 (± 10) ohm

Material/Finish:

High-alloy steel, nickel plated, painted

Temperature:

Operating range
0 °F to 150 °F (-18 °C to 65 °C)

Seal Type:

Environmentally sealed, IP67

Safe Overload:

150% full scale

Safe Sideload:

100% full scale

Rated Excitation:

5 to 10 VDC (15 V maximum)

Nonlinearity:

0.03% full scale

Hysteresis:

0.02% full scale

Insulation Resistance:

5,000 megohm

Cable Length:

25 ft

Cable Color Code:

Red +Excitation
Black -Excitation
Green +Signal
White -Signal

Warranty:

Two-year limited

Approvals:

cFMus