

DOUBLE-ENDED BEAM
RL70000 Painted
 Alloy Steel, Environmentally Sealed, IP67



Picture is a representation of actual product.

Approvals

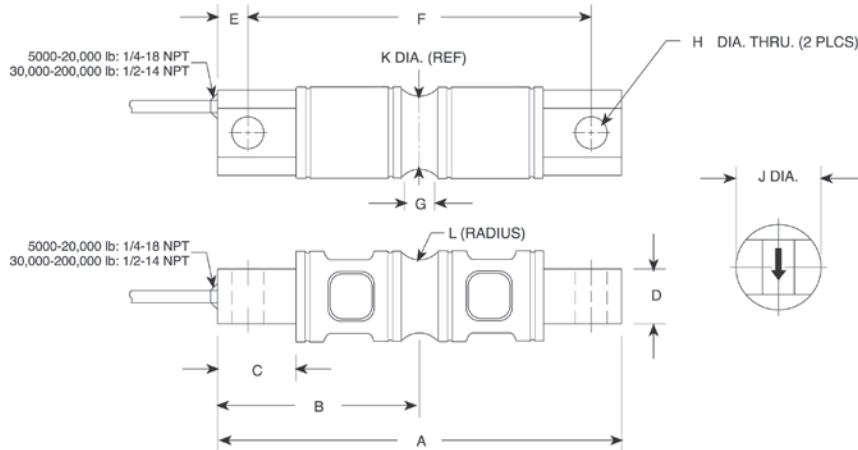


Order Information

Load Rating	Part #	Est. Weight	Price
5,000 lb	198196	5 lb	Consult
10,000 lb	198197	6 lb	Consult
20,000 lb	198198	7 lb	Consult
30,000 lb	198199	18 lb	Consult
40,000 lb	198200	18 lb	Consult
50,000 lb	198201	18 lb	Consult
60,000 lb	198202	18 lb	Consult
100,000 lb	198203	28 lb	Consult
150,000 lb	198204	34 lb	Consult
200,000 lb	198205	90 lb	Consult
250,000 lb	198206	93 lb	Consult

Dimensions

Rated Capacity	A	B	C	D	E	F	G	H	J	K	L
5,000 to 10,000	8.12	4.06	1.44	1.12	0.62	6.88	0.62	0.66	1.70	1.48	0.50
20,000	8.12	4.06	1.44	1.12	0.62	6.88	0.84	0.66	1.95	1.48	0.50
30,000 to 60,000	10.25	5.12	1.88	2.37	0.88	8.50	1.00	1.06	3.20	2.73	1.00
100,000	11.25	5.62	1.88	2.50	0.88	9.50	1.00	1.06	3.50	3.24	1.50
150,000	11.25	5.62	1.88	2.80	0.88	9.50	1.25	1.06	3.90	3.64	1.50
200,000 to 250,000	16.10	8.05	3.05	4.60	1.55	13.00	1.30	1.56	5.38	5.17	2.00



Interchangeable Products

- RICE LAKE WEIGHING SYSTEMS
RL70000*.....page 128
- RICE LAKE WEIGHING SYSTEMS
RL72020*.....page 124
- RICE LAKE WEIGHING SYSTEMS
RL72020P.....page 126

Weigh Module Available

- RICE LAKE WEIGHING SYSTEMS
EZ Mount 1..... page 62

*Cells are unpainted

Specifications

- Full Scale Output:**
3.0 mV/V
- Output Resistance:**
5 to 10 k: 703 (± 4) ohm
20 to 150 k: 700 (± 5) ohm
200 to 250 k: 700 (± 5) ohm
- Input Resistance:**
5 to 10 k: 700 (± 14) ohm
20 to 150 k: 770 (± 10) ohm
200 to 250 k: 700 (± 14) ohm
- Material/Finish:**
High-alloy steel, nickel plated
- Temperature:**
Compensated range
14 °F to 104 °F (-10 °C to 40 °C)
Operating range
0 °F to 150 °F (-18 °C to 65 °C)

- Seal Type:**
Environmentally sealed, IP67
- Safe Overload:**
150% full scale
- Safe Sideload:**
100% full scale
- Rated Excitation:**
5 to 10 VDC (15 V maximum)
- Combined Error:**
0.02% full scale
- Insulation Resistance:**
5,000 megohm

- Deflection at Capacity:**
5,000 lb: 0.02 in
10,000 lb: 0.025 in
20,000 lb: 0.042 in
30,000 to 50,000 lb: 0.02 in
60,000 lb: 0.025 in
100,000 lb: 0.02 in

- Cable Length:**
30 ft
- Cable Diameter:**
5,000 to 20,000 lb: 0.200 in
30,000 to 250,000 lb: 0.305 in
Polyurethane jacket

- Cable Color Code:**
Red +Excitation
Black -Excitation
Green +Signal
White -Signal

- Warranty:**
Two-year limited

- Approvals:**
cFMus
NTEP 97-125

**RICE LAKE
LOAD CELLS**