



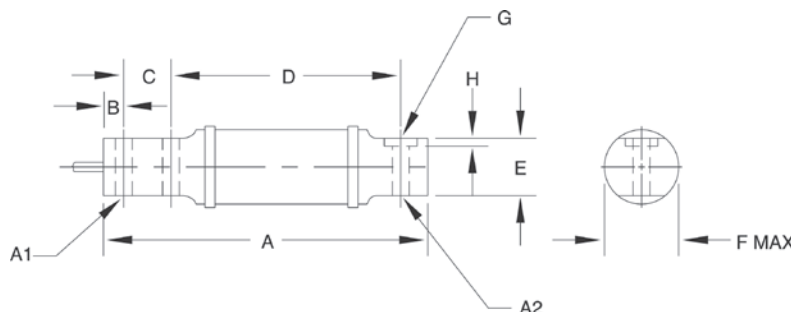
Picture is a representation of actual product.

Order Information

Load Rating	Part #	Est. Weight	Price
50 lb	17395	3 lb	Consult
100 lb	17343	3 lb	Consult
200 lb	17396	3 lb	Consult
250 lb	17397	3 lb	Consult
500 lb	17398	3 lb	Consult
1,000 lb	17344	3 lb	Consult
2,500 lb	17345	9 lb	Consult

Dimensions

Rated Capacity	A	A1	A2	B	C	D	E	F	G	H
lb/in										
50 to 100	6.00	0.31	0.31	0.38	0.88	4.25	1.06	1.41	—	—
200 to 1,000	6.62	0.52	0.52	0.50	1.12	4.25	1.06	1.41	—	—
2,500	11.38	0.53	0.62	0.50	1.75	8.25	1.25	2.19	1.19	0.12



Interchangeable Products

- HBK®
- BBS page 225
- VPG® SENSORTRONICS®
- 65087
- FAIRBANKS®
- 3-481XX-1
- FAIRBANKS
- 3-48660-1
- ARTECH®
- 40310

Specifications

- Full Scale Output:**
2.0 mV/V
- Output Resistance:**
831 (± 50) ohm
- Input Resistance:**
750 (±) ohm
- Material/Finish:**
High-alloy steel, nickel plated
- Temperature:**
Operating range
0 °F to 150 °F (-18 °C to 65 °C)
- Seal Type:**
Environmentally sealed with neoprene sleeve, IP65
- Safe Overload:**
150% full scale
- Rated Excitation:**
5 to 10 VDC (15 V maximum)
- Deflection at Capacity:**
50 lb: 0.015 in
100 lb: 0.005 in
200 to 250 lb: 0.030 in
500 lb: 0.025 in
1,000 lb: 0.040 in
2,500 lb: 0.120 in
- Nonlinearity:**
0.03% full scale
- Hysteresis:**
0.02% full scale
- Insulation Resistance:**
5,000 megohm
- Cable Length:**
10 ft
- Cable Diameter:**
0.200 in polyurethane jacket
- Cable Color Code:**
Green +Excitation
Black -Excitation
White +Signal
Red -Signal
- Warranty:**
Two-year limited

RICE LAKE
LOAD CELLS