



Picture is a representation of actual product.

Approvals



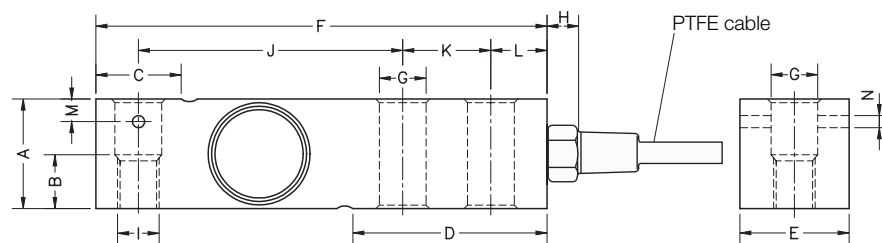
Order Information

| Load Rating | Part # | Est. Weight | Price |
|-------------|---------------|-------------|---------|
| 1,000 lb | 190654 | 3 lb | Consult |
| 2,000 lb | 190655 | 3 lb | Consult |
| 2,500 lb | 190656 | 3 lb | Consult |
| 4,000 lb | 190657 | 3 lb | Consult |
| 5,000 lb SE | 190658 | 3 lb | Consult |
| 5,000 lb LE | 190659 | 5 lb | Consult |
| 10,000 lb | 190660 | 5 lb | Consult |

SE=small envelope; LE=large envelope

Dimensions

| Rated Capacity | A | B | C | D | E | F | G | H | I | J | K | L | M | N |
|--------------------|------|------|------|------|------|------|------|------|------------|------|------|------|------|------|
| lb/in | | | | | | | | | | | | | | |
| 1,000 to 5,000 SE | 1.24 | 0.59 | 0.96 | 2.20 | 1.25 | 5.12 | 0.53 | 0.70 | 1/2-20 UNF | 3.00 | 1.00 | 0.62 | 0.25 | 0.13 |
| 5,000 LE to 10,000 | 1.50 | — | 1.45 | 2.99 | 1.50 | 6.75 | 0.80 | 0.70 | 3/4-16 UNF | 3.75 | 1.50 | 0.75 | — | — |



Interchangeable Products

- RICE LAKE WEIGHING SYSTEMS
- RL32018S-HE**.....page 104
- VPG® SENSORTRONICS®
- 65083**.....page 284
- VPG® CELTRON
- SQB-HSS**.....page 192

Weigh Module Available

- RICE LAKE WEIGHING SYSTEMS
- RL1800 Series**.....page 42

Specifications

- Full Scale Output:**
3.0 mV/V ±0.05% current matched
- Output Resistance:**
350 (± 3) ohm
- Input Resistance:**
400 (± 20) ohm
- Material/Finish:**
Stainless steel
- Temperature:**
Compensated range
-14 °F to 104 °F (-10 °C to 40 °C)
Operating range
0 °F to 150 °F (-18 °C to 65 °C)
- Seal Type:**
Hermetically sealed, IP69K
- Safe Overload:**
150% full scale
- Safe Sideload:**
100% full scale
- Rated Excitation:**
10 VDC (15 V maximum)
- Combined Error:**
0.017% full scale
- Insulation Resistance:**
>5,000 megohm
- Deflection:**
0.2 to 0.4 mm
- Cable Length:**
20 ft PTFE cable
- Cable Color Code:**
Red +Excitation
Black -Excitation
Green +Signal
White -Signal
- Warranty:**
Two-year limited
- Approvals:**
cFMus

**RICE LAKE
LOAD CELLS**