

SINGLE-ENDED BEAM
RL30002 Thru Hole

Alloy Steel, Environmentally Sealed, NTEP Certified 1:5,000 IIII Class III Multiple Cell, IP67



Picture is a representation of actual product.

Approvals



Order Information

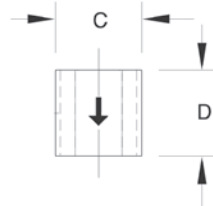
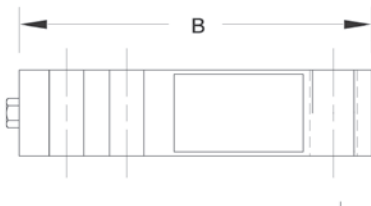
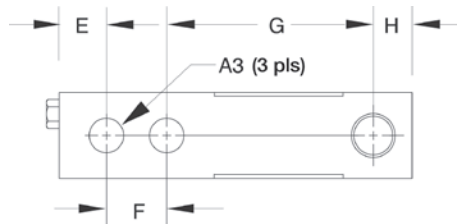
Load Rating	Part #	Est. Weight	Price
NTEP Certified			
1,000 lb	21521	3 lb	Consult
2,000 lb	21522	3 lb	Consult
2,500 lb	21523	3 lb	Consult
4,000 lb	21524	3 lb	Consult
5,000 lb SE	21525	3 lb	Consult
Conduit Adapter Kit (must be factory installed to maintain warranty)			
3/8-24 nipple	31533*	1 lb	Consult
3/8-24 to 1/4-18 NPT	31534*	1 lb	Consult

SE=small envelope

* PN 31533 and PN 31534 must be installed together to form the Conduit Adapter Kit

Dimensions

Rated Capacity	A3	B	C	D	E	F	G	H
lb/in								
1,000 to 5,000 SE	0.53	5.12	1.25	1.25	0.62	1.00	3.00	0.50



Interchangeable Products

VPG® TEDEA-HUNTLEIGH
3410
 ARTECH®
30210

Specifications

Full Scale Output:
 3.0 mV/V

Bridge Resistance:
 350 ohm, nominal

Material/Finish:
 High-alloy steel, nickel plated

Temperature:
 Compensated range
 14 °F to 104 °F (-10 °C to 40 °C)
 Operating range
 0 °F to 150 °F (-18 °C to 65 °C)

Seal Type:
 Environmentally sealed, IP67

Safe Overload:
 150% full scale

Safe Sideload:
 100% full scale

Rated Excitation:
 5 to 10 VDC (15 V maximum)

Combined Error:
 0.02% full scale

Insulation Resistance:
 5,000 megohm

Deflection at Capacity:
 1,000 lb: 0.013 in
 2,000 to 3,000 lb: 0.015 in
 4,000 to 5,000 lb: 0.025 in

Cable Length:
 20 ft

Cable Diameter:
 0.200 in polyurethane jacket

Cable Color Code:
 Red +Excitation
 Black -Excitation
 Green +Signal
 White -Signal

Warranty:
 Two-year limited

Approvals:
 cFMus
 NTEP 98-043

**RICE LAKE
 LOAD CELLS**