

RL32019S-HE

Stainless Steel, Hermetically Sealed, NTEP Certified 1:5,000 Class III Multiple Cell, IP69K

LOAD CELLS /
WEIGH MODULES



Picture is a representation of actual product.

Approvals

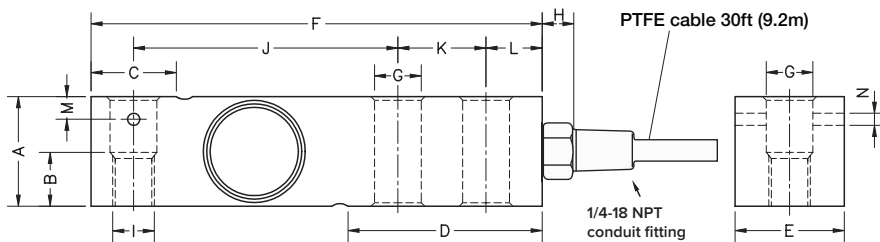


Order Information

Load Rating	Part #	Est. Weight	Price
1,000 lb	191629	4 lb	Consult
2,500 lb	191630	4 lb	Consult
4,000 lb	191631	4 lb	Consult
5,000 lbSE	208668	4 lb	Consult
5,000 lb	191632	6 lb	Consult
10,000 lb	191633	6 lb	Consult

Dimensions

Rated Capacity	A	B	C	D	E	F	G	H	I	J	K	L	M	N
1,000 to 4,000	1.24	0.59	0.96	2.20	1.24	5.12	0.53	0.70	1/2-20 UNF	3.00	1.00	0.62	0.25	0.13
5,000 to 10,000	1.50	0.75	1.45	2.99	1.50	6.75	0.80	0.70	3/4-16 UNF	3.75	1.50	0.75	—	—



Interchangeable Products

RICE LAKE WEIGHING SYSTEMS
RL35082
 VPG® SENSORTRONICS®
65083S (20 ft cable)

Specifications

- Full Scale Output:** 2.0 mV/V ±0.05% current matched
- Output Resistance:** 350 (± 3) ohm
- Input Resistance:** 400 (± 20) ohm
- Material/Finish:** Stainless steel
- Temperature:** Compensated range 14 °F to 104 °F (-10 °C to 40 °C)
Operating range 0 °F to 200 °F (-18 °C to 93 °C)
- Seal Type:** Hermetically sealed, IP69K
- Safe Overload:** 150% full scale
- Rated Excitation:** 5 to 10 VDC (15 V maximum)
- Combined Error:** 0.017% full scale
- Insulation Resistance:** >5,000 megohm
- Deflection:** 0.2 to 0.4 mm
- Cable Length:** 30 ft PTFE cable
- Cable Color Code:** Red +Excitation
Black -Excitation
Green +Signal
White -Signal
- Warranty:** Two-year limited
- Approvals:** cFMus
NTEP 18-106