

SINGLE-ENDED BEAM
RL32218S-HE

Stainless Steel, Hermetically Sealed, NTEP Certified 1:5,000 Class III Multiple Cell, IP69K



Picture is a representation of actual product.

Approvals

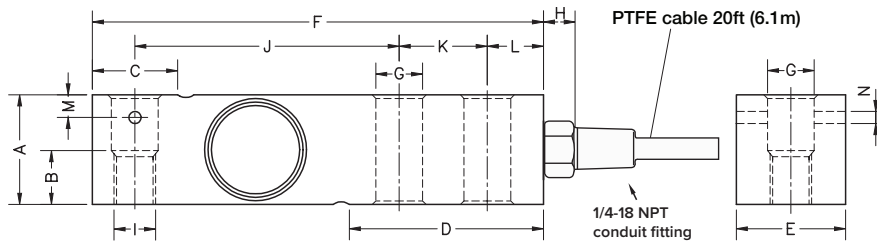


Order Information

Load Rating	Part #	Est. Weight	Price
1,000 lb	191634	3 lb	Consult
2,500 lb	191635	3 lb	Consult
4,000 lb	191636	3 lb	Consult
5,000 lbSE	208669	3 lb	Consult
5,000 lb	191637	5 lb	Consult
10,000 lb	191638	5 lb	Consult

Dimensions

Rated Capacity	A	B	C	D	E	F	G	H	I	J	K	L	M	N
1,000 to 4,000 lb/in	1.24	0.59	0.96	2.20	1.24	5.12	0.53	0.70	1/2-20 UNF	3.00	1.00	0.62	0.25	0.13
5,000 to 10,000	1.50	0.75	1.45	2.99	1.50	6.75	0.80	0.70	3/4-16 UNF	3.75	1.50	0.75	-	-



Interchangeable Products

RICE LAKE WEIGHING SYSTEMS
RL35082
VPG® SENSORTRONICS®
65083S

Weigh Module Available

RICE LAKE WEIGHING SYSTEMS
RL50210TA
RICE LAKE WEIGHING SYSTEMS
RL1800 Series

LOAD CELLS / WEIGH MODULES

Specifications

- Full Scale Output:**
2.0 mV/V ±0.05% current matched
- Output Resistance:**
350 (± 3) ohm
- Input Resistance:**
400 (± 20) ohm
- Material/Finish:**
Stainless steel
- Temperature:**
Compensated range
14 °F to 104 °F (-10 °C to 40 °C)
Operating range
0 °F to 200 °F (-18 °C to 93 °C)
- Seal Type:**
Hermetically sealed, IP69K
- Safe Overload:**
150% full scale
- Rated Excitation:**
5 to 10 VDC (15 V maximum)
- Combined Error:**
0.017% full scale
- Insulation Resistance:**
>5,000 megohm
- Cable Length:**
20 ft PTFE cable
- Cable Color Code:**
Red +Excitation
Black -Excitation
Green +Signal
White -Signal
- Warranty:**
Two-year limited
- Approvals:**
cFMus
NTEP 18-106